



EDORA

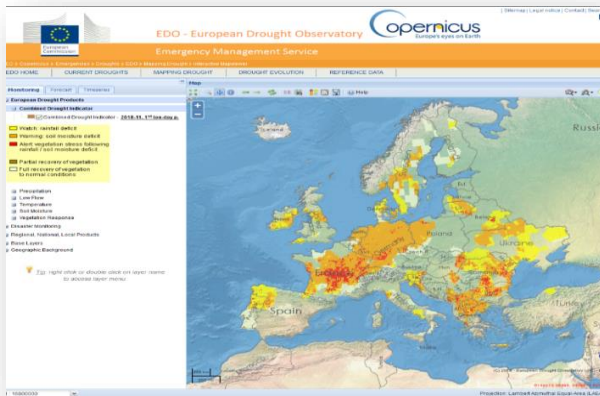
European Drought Observatory for Resilience and Adaptation

DG Environment
Joint Research Centre

European & Global Drought Observatory



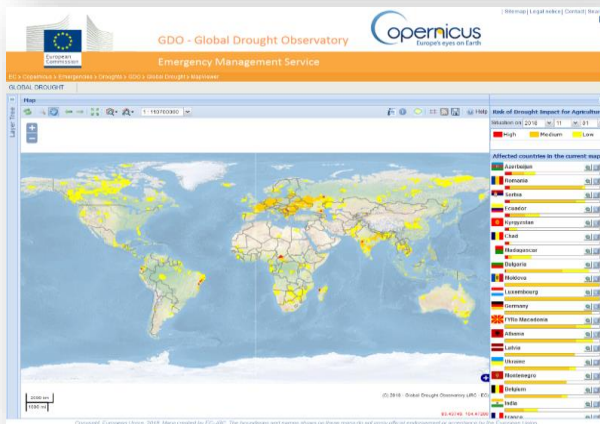
part of Copernicus Emergency Management Service (EMS) since 2018



European Drought Observatory (EDO)

<https://edo.jrc.ec.europa.eu/europe>

- JRC collaboration with DG ENV and WS&D Expert Group (WFD) 2008-2012
- In continuous development, hosted by JRC
- Based on a combination of hazard and impact-related indicators



Global Drought Observatory (GDO)

<https://edo.jrc.ec.europa.eu/world>

- JRC collaboration with DG ECHO – ERCC since 2016
- adds dynamic assessment of risk of impact for agriculture/vegetation

$$risk = f(hazard, exposure, vulnerability)$$

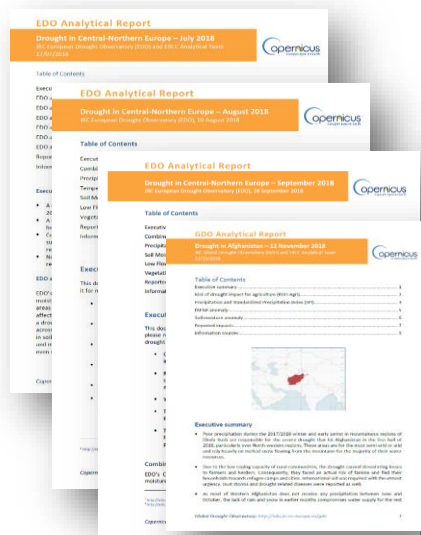
European & Global Drought Observatory



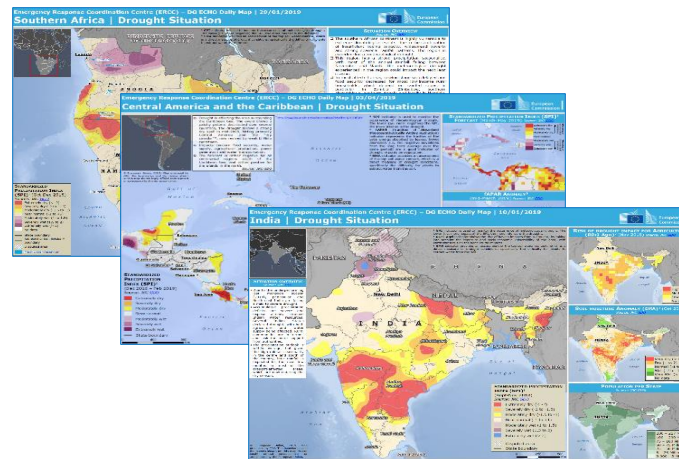
part of Copernicus Emergency Management Service (EMS) since 2018

Permanent on-line platforms for continuous drought monitoring
In case of severe droughts EDO & GDO produce:

Analytical reports on the drought evolution and related impacts



Daily Maps for the Emergency Response Coordination Centre (ERCC)



Products for the Global Disaster Alert and Coordination System (GDACS), International aid organizations, UNCCD, ...



EDORA <https://edo.jrc.ec.europa.eu/edora>

European Drought Observatory for Resilience and Adaptation

European Commission Project, collaboration between DG ENV and JRC



Project Objectives

- enhance the **resilience and adaptation** to drought across the EU, considering climate change
- development and implementation of a **drought impact database** in different sectors
- development and implementation of a **drought risk assessment** methodology in different sectors
- development of a comprehensive **drought risk atlas**
- supporting (the network of) **drought observatories** in the Member States
- analysis of Member States' approach to **drought management**
- study on (cost-effectiveness of) **climate adaptation actions** in different sectors

EDORA <https://edo.jrc.ec.europa.eu/edora>

European Drought Observatory for Resilience and Adaptation

European Commission Project, collaboration between DG ENV and JRC



Project Actions

- part outsourced, part in-house research and development
- EU network of drought observatories
 - expand the EDO network of drought observatories
 - assist the development of member states' drought observatories and/or establish new ones
 - enhance knowledge and data exchange between drought observatories
- communication and dissemination activities



Agriculture



Public Water
Supply



Energy
Production



Waterborne
Transport



Terrestrial &
Freshwater
Ecosystems



Forestry/
Wildfires



Tourism



Human Health



Thank you



© European Union 2021

Unless otherwise noted the reuse of this presentation is authorised under the [CC BY 4.0](https://creativecommons.org/licenses/by/4.0/) license. For any use or reproduction of elements that are not owned by the EU, permission may need to be sought directly from the respective right holders.