



UNITED NATIONS
UNIVERSITY

UNU-FLORES

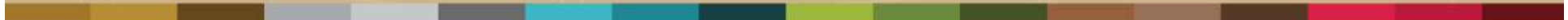
Institute for Integrated Management
of Material Fluxes and of Resources

flores.unu.edu

Resource Nexus Perspective on Climate Adaptation and Resilience (KlimaKonform)

United Nations University FLORES

Advancing a Nexus Approach to the Sustainable
Management of Environmental Resources



Project objective



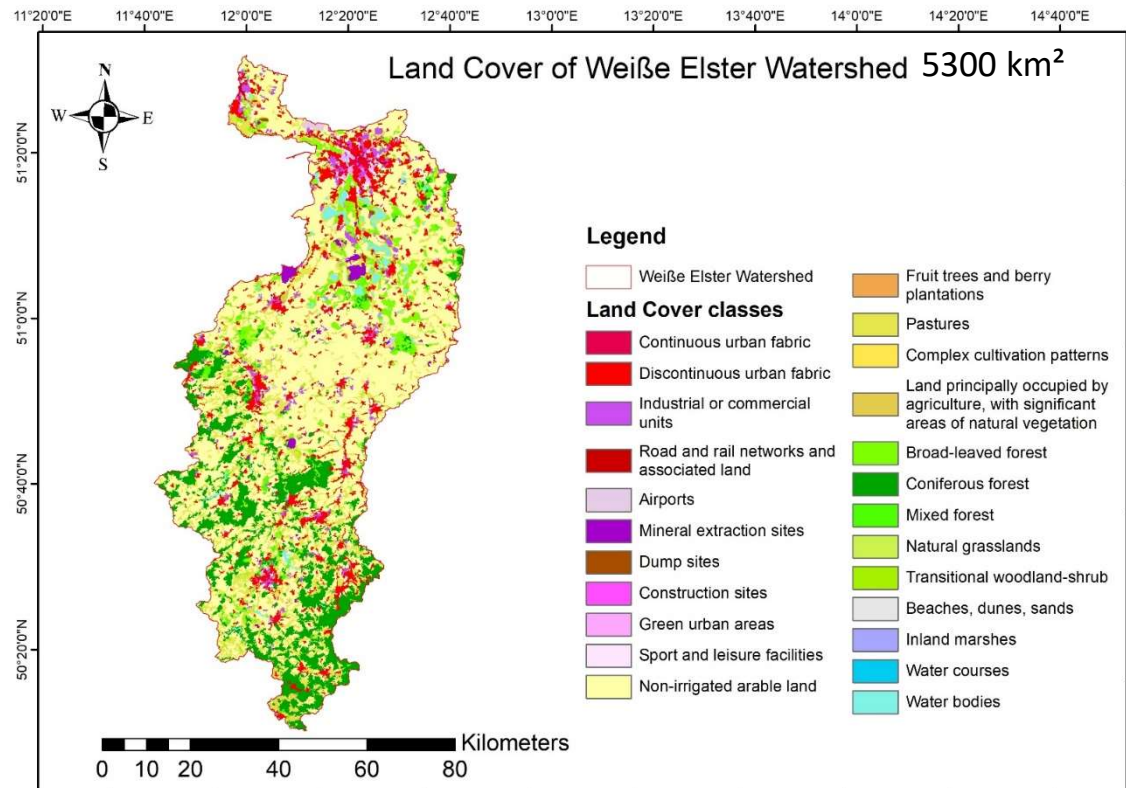
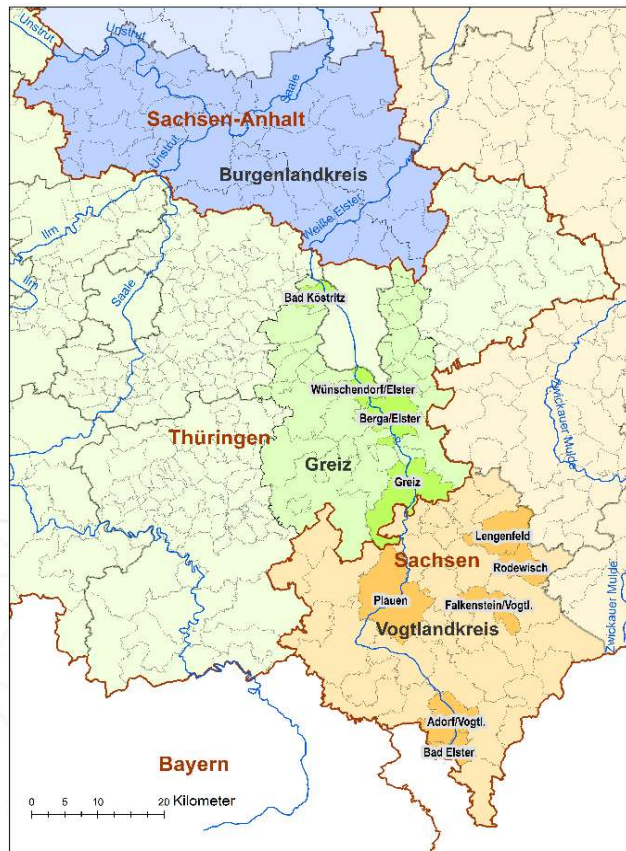
- Stakeholder analyse
 - Identify key **stakeholders**
 - Target-oriented **capacity development**
- Resilience assessment (target group: communities, e.g., urban planning & SMEs)
 - **Assessment of locations** based on climate-related changes
 - The net **economic-ecological effect** of climate-related changes
 - Development of **adaptation strategies**
- Scenarios for agri-food supply chain (target group: municipalities and/or rural districts)
 - **Recommendation for action** - Risk management process
 - **Adaptation matrix** for climate risk management



UNITED NATIONS
UNIVERSITY

UNU-FLORES

Study Area: Low mountain region





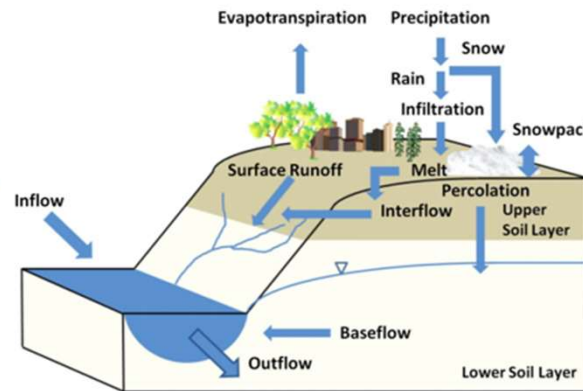
UNITED NATIONS
UNIVERSITY

UNU-FLORES

Ecological assessment



- | | |
|--------------------|-------------|
| ■ Crop | ■ Shrubland |
| ■ Deciduous Forest | ■ Wetland |
| ■ Evergreen Forest | ■ Water |
| ■ Mixed Forest | ■ Urban |
| ■ Grassland | ■ Barren |
| ■ Impervious | |



Data needs

- Digital elevation model
- Klima
- Leaf Area Index
- Soil information
- Land-use information
- Water balance measurements

Sponsored by the



STAATSMINISTERIUM
FÜR WISSENSCHAFT
KULTUR UND TOURISMUS



Stay connected



Quarterly newsletter: bit.ly/nexnews