

FLOOD & DROUGHT MANAGEMENT TOOLS



Volta



Lake Victoria



Chao Phraya

Contacts:

Oluf Zeilund Jessen *DHI*
ozj@dhigroup.com

Katharine Cross *International Water Association (IWA)*
katharine.cross@iwahq.org

Data portal

Background – Support basin and water utility planning

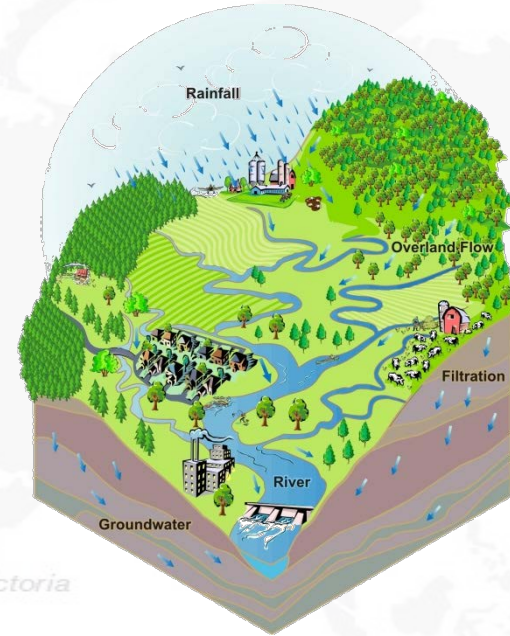


Basin plans

- TDA/SAP process (from GEF process)
- Integrated water resource management (IWRM) plans
- Basin and catchment plans

Utility plans

- Water Safety Plans - *Management approach developed by WHO (and IWA) to ensure the safety and acceptability of a drinking water supply – from catchment to end user.*



Water Safety Plan
Step-by-step risk management
for drinking-water suppliers

GEF Flood & Drought Management tools project

- Facilitating a scientific approach to decision-making (TDA/SAP, IWRM, WSP etc.)
- Support decision processes at basin and local level
- Technical tools supporting the inclusion of flood and drought issues into existing planning processes
- Implemented by UNEP; Executed by DHI and IWA from June 2014 to June 2018

Project web site: <http://fdmt.iwlearn.org>



Global approach to local application

Global approach

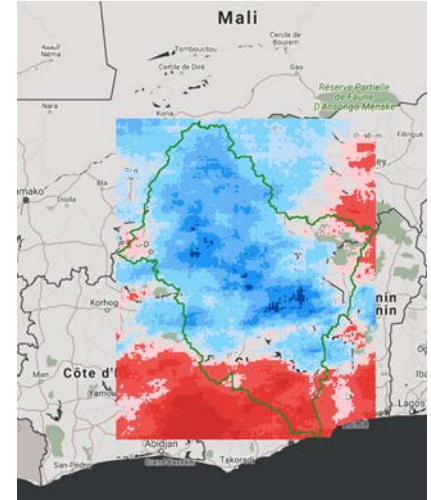


Tools/guidelines

**Technical tools
supporting decision
making at basin and
local level**

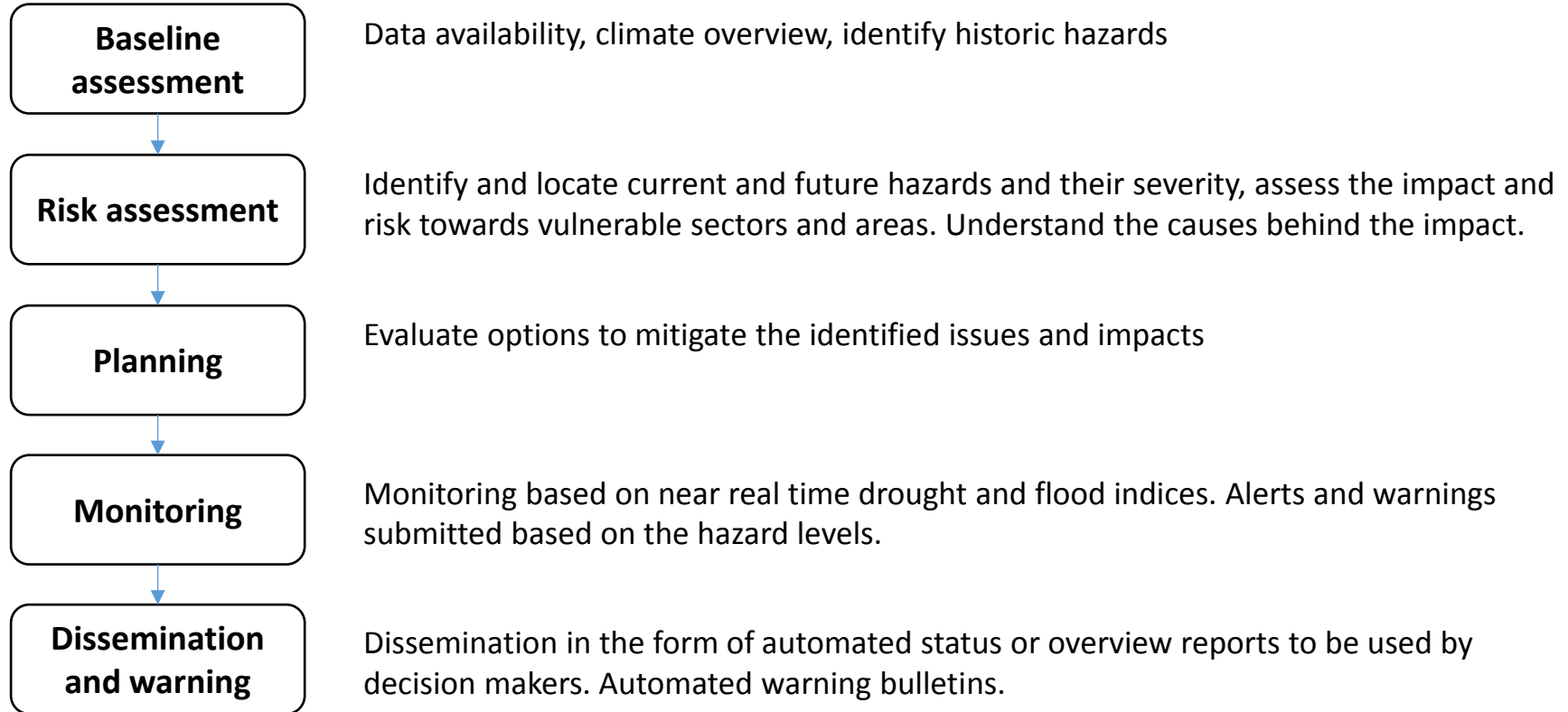
**Training
Guidelines**

Local application



Freely available tools supporting planning at transboundary, national and local level

Key processes supported by the project



Key processes supported by the project

www.flooddroughtmonitor.com

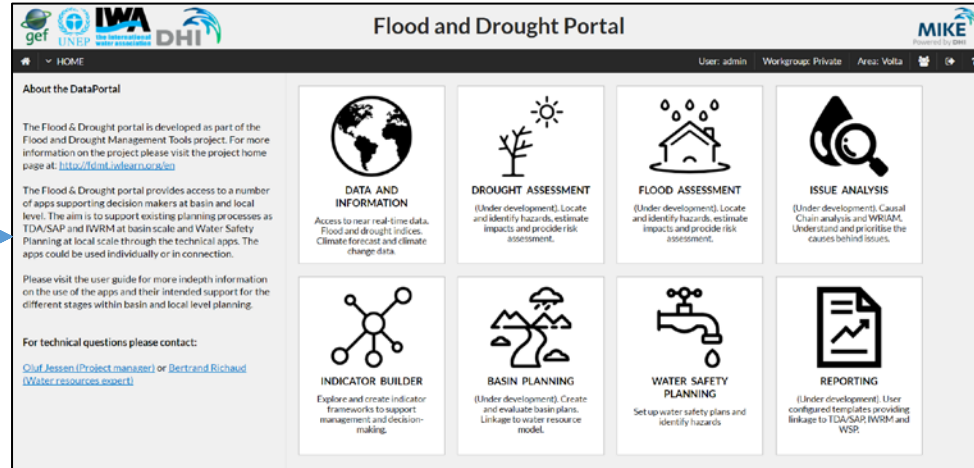
Baseline assessment

Risk assessment

Planning


Monitoring

Dissemination and warning





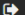
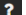
Planning steps supported with technical applications assessable from the flood and drought portal

Technical applications supporting basin planning



Flood and Drought Portal



User: admin Workgroup: Private Area: Volta   

About the DataPortal


The Flood & Drought portal is developed as part of the Flood and Drought Management Tools project. For more information on the project please visit the project home page at: <http://fdmt.iwlearn.org/en>

The Flood & Drought portal provides access to a number of apps supporting decision makers at basin and local level. The aim is to support existing planning processes as TDA/SAP and IWRM at basin scale and Water Safety Planning at local scale through the technical apps. The apps could be used individually or in connection.

Please visit the user guide for more indepth information on the use of the apps and their intended support for the different stages within basin and local level planning.


For technical questions please contact:

[Oluf Jessen \(Project manager\)](#) or [Bertrand Richaud \(Water resources expert\)](#)




DATA AND INFORMATION

Access to near real-time data.
Flood and drought indices.
Climate forecast and climate change data.




DROUGHT ASSESSMENT

(Under development). Locate and identify hazards, estimate impacts and provide risk assessment.




FLOOD ASSESSMENT

(Under development). Locate and identify hazards, estimate impacts and provide risk assessment.




ISSUE ANALYSIS

(Under development). Causal Chain analysis and WRIAM. Understand and prioritise the causes behind issues.




INDICATOR BUILDER

Explore and create indicator frameworks to support management and decision-making.




BASIN PLANNING

(Under development). Create and evaluate basin plans. Linkage to water resource model.



WATER SAFETY PLANNING

Set up water safety plans and identify hazards



REPORTING

(Under development). User configured templates providing linkage to TDA/SAP, IWRM and WSP.

Baseline
assessment

Risk
assessment

Planning

Monitoring

Dissemination
and warning

Data and information

Objectives

- Provide data and information **at any location** for support to a planning process

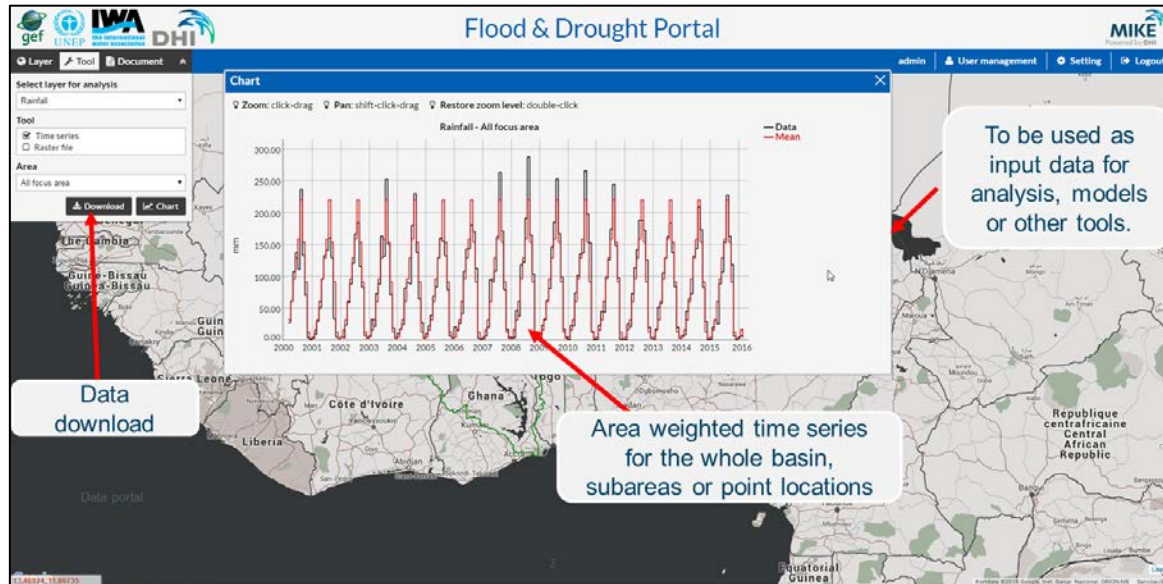
Baseline assessment

Risk assessment

Planning

Monitoring

Dissemination and warning



Near real time satellite data

Observation data

Indices

Seasonal forecast

Climate change



DATA AND INFORMATION

Access to near real-time data. Flood and drought indices. Climate forecast and climate change data.

Drought assessment

Objectives

- Identify location and severity of drought hazard
- Evaluate impact of drought hazard
- Provide risk assessment towards specific vulnerable areas or sectors
- Provide drought early warning

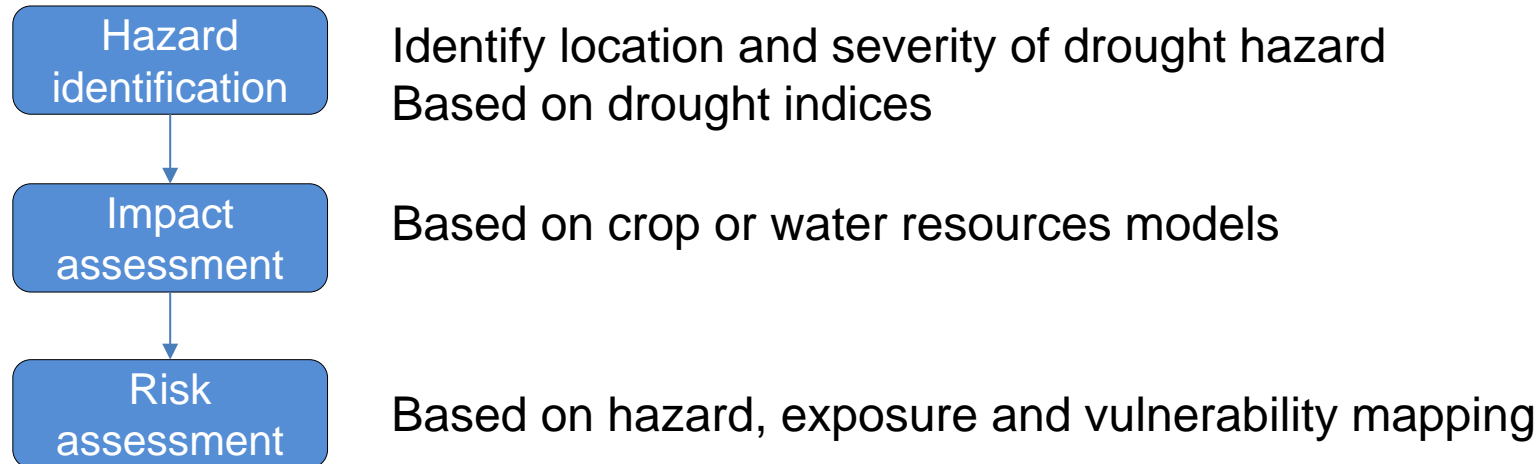
Baseline
assessment

Risk
assessment

Planning

Monitoring

Dissemination
and warning



DROUGHT ASSESSMENT
 (Under development). Locate
 and identify hazards, estimate
 impacts and provide risk
 assessment.

Flood assessment

Objectives

- Assess historic flood hazards and risks
- Provide warning and risk assessment for flash flood
- Impacts on catchment run-off

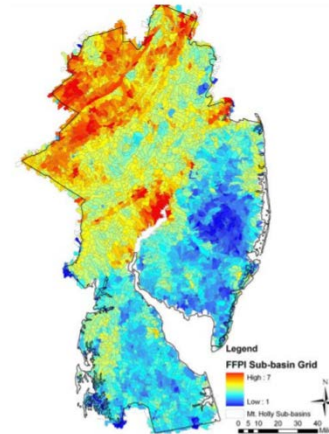
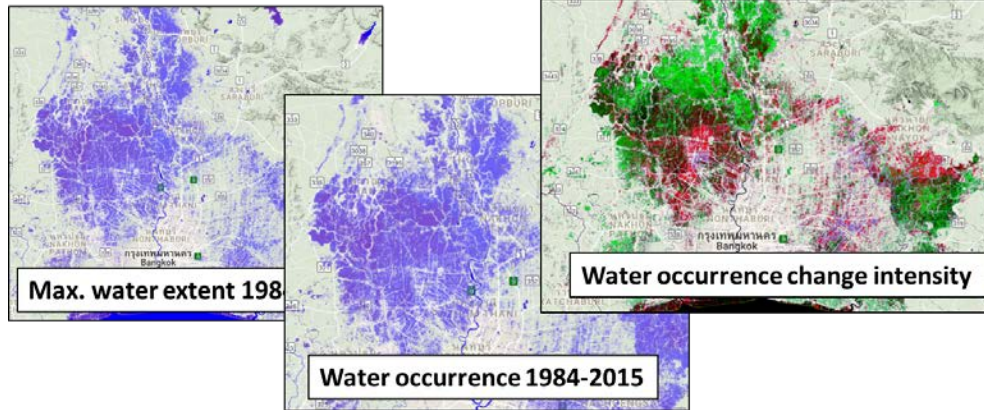
Baseline
assessment

Risk
assessment

Planning

Monitoring

Dissemination
and warning



Flash Flood Potential Index (FFPI)



FLOOD ASSESSMENT
(Under development). Locate and identify hazards, estimate impacts and provide risk assessment.

Issue analysis

Objectives

- Evaluate the causes behind an environmental impact using the CCA and WRIAM approaches

CCA: Causal Chain Analysis, WRIAM: Water Resources Issues Assessment Method

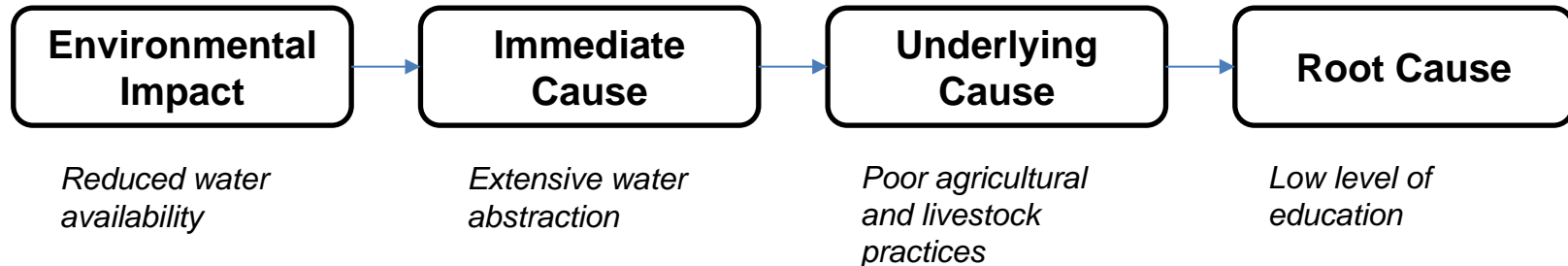
Baseline
assessment

Risk
assessment

Planning

Monitoring

Dissemination
and warning



The prioritised causes will be the target in the following efforts to mitigate or adapt to the impact of specific environmental issues



ISSUE ANALYSIS
 (Under development): Causal Chain analysis and WRIAM. Understand and prioritise the causes behind issues.

Water indicator

Objectives

- Assist user in selecting relevant indicators for measuring the state of a specific issue
- Provide information about the required data and the processing steps
- Provide information about the application of the indicators

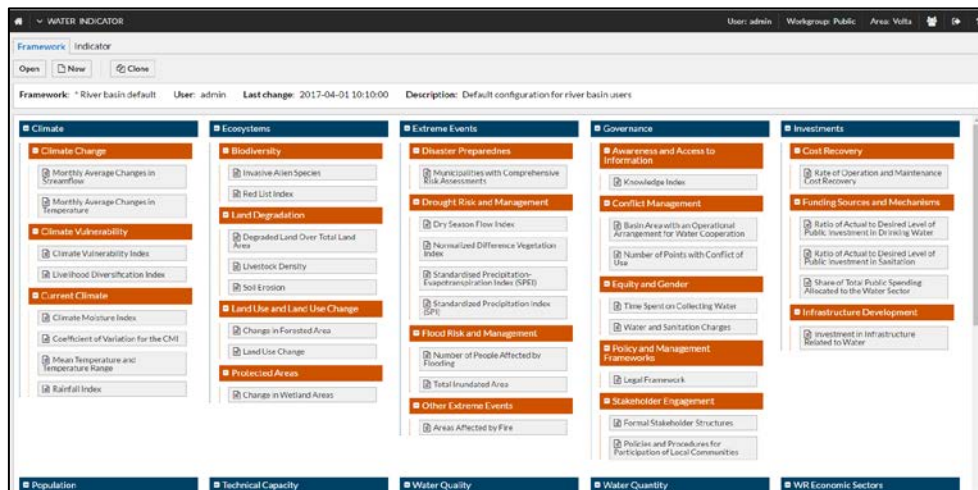
Baseline
assessment

Risk
assessment

Planning

Monitoring

Dissemination
and warning



The screenshot shows the 'WATER INDICATOR' web application. At the top, it displays the user 'admin' and the 'Public' group. Below this, there's a 'Framework' section with a dropdown set to 'River basin default' and a 'Last change' timestamp of '2017-04-01 10:10:00'. The main area is divided into several columns, each representing a category of indicators. These categories include Climate, Ecosystems, Extreme Events, Governance, Investments, Population, Technical Capacity, Water Quality, Water Quantity, and WRI Economic Sectors. Each category contains a list of specific indicators, many of which are accompanied by a checkbox, suggesting they can be selected or deselected. For example, under 'Climate', there are indicators like 'Monthly Average Changes in Streamflow' and 'Monthly Average Changes in Temperature'. Under 'Extreme Events', there are indicators like 'Disaster Preparedness' and 'Drought Risk and Management'.



WATER INDICATOR
Identify water related indicators
to support management and
decision-making.

Basin planning

Objectives

- Evaluate planning options for mitigating or adapting to flood or drought related hazards
- Support seasonal and long term planning

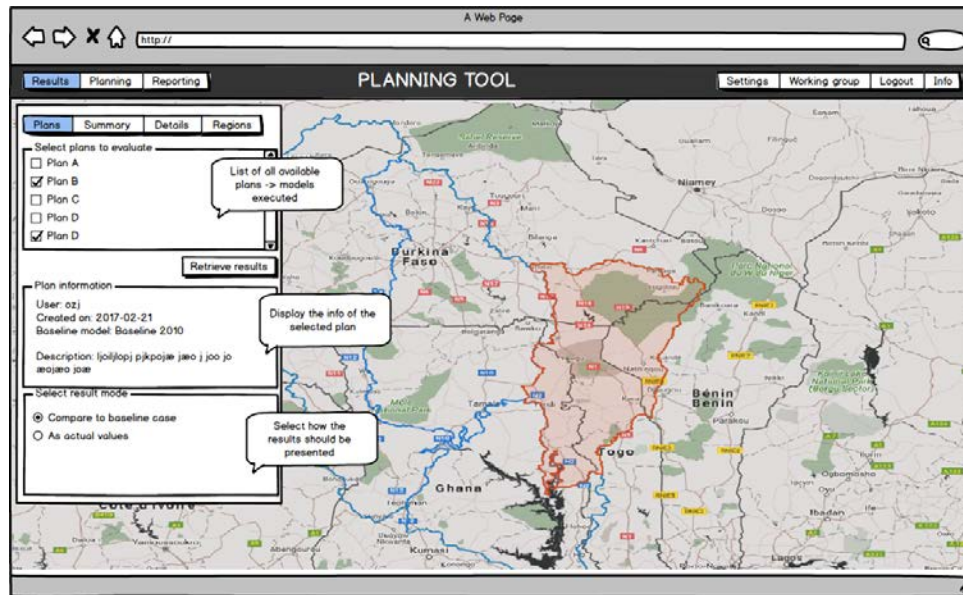
Baseline
assessment

Risk
assessment

Planning

Monitoring

Dissemination
and warning



BASIN PLANNING
(Under development). Create and evaluate basin plans. Linkage to water resource model.

Reporting

Objectives

- Produce user configured reports
- Disseminate data, information and results in reports
- Provide templates supporting the TDA, IWRM and WSP planning process

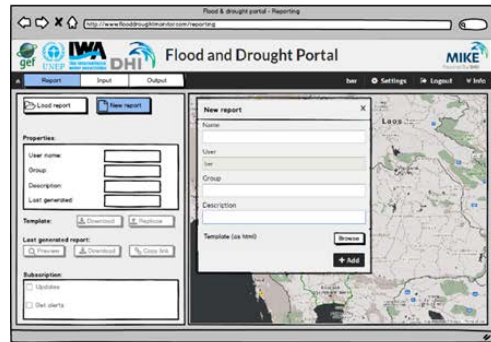
Baseline
assessment

Risk
assessment

Planning

Monitoring

Dissemination
and warning



TDA/SAP template

IWRM template

WSP template

Data overview/status template

Warning or alert template

...

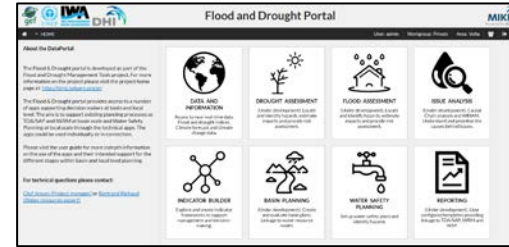


REPORTING

(Under development). User
configured templates providing
linkage to TDA/SAP, IWRM and
WSP.

Key outputs

Web portal providing access to applications supporting national and transboundary planning



Training materials from a number of regional and national workshops and technical trainings in Africa.



Expert users within the Lake Victoria and Volta basin