

# **CAPACITY DEVELOPMENT TO SUPPORT NATIONAL DROUGHT MANAGEMENT POLICIES**

**05 – 08 AUGUST 2014**

**ADDIS ABABA  
ETHIOPIA**

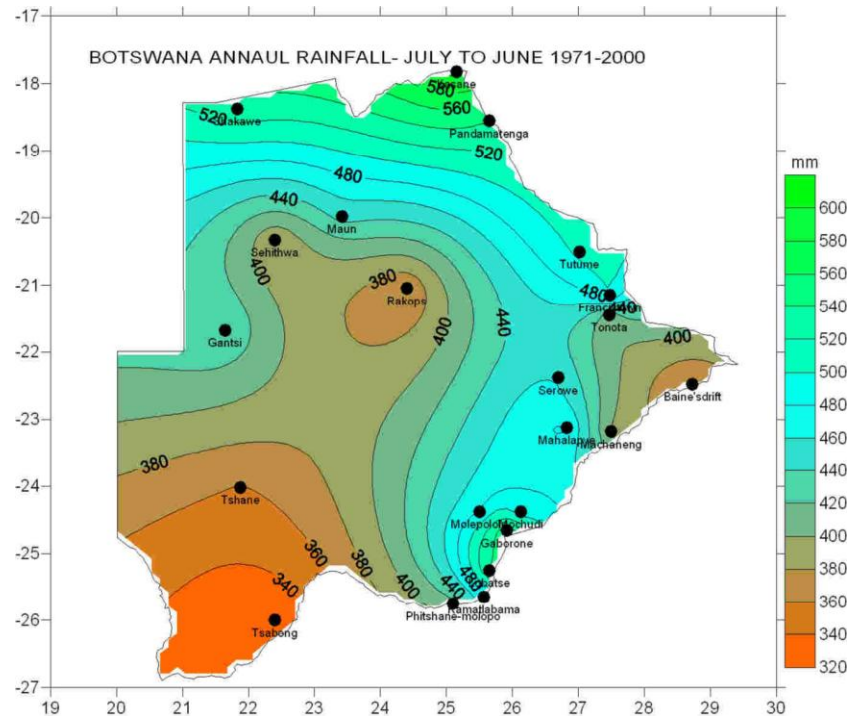
# OUTLINE

- ▶ Background
- ▶ Recent drought episodes
- ▶ Drought Impacts
- ▶ Botswana EWS
- ▶ Relief and Response



# Background

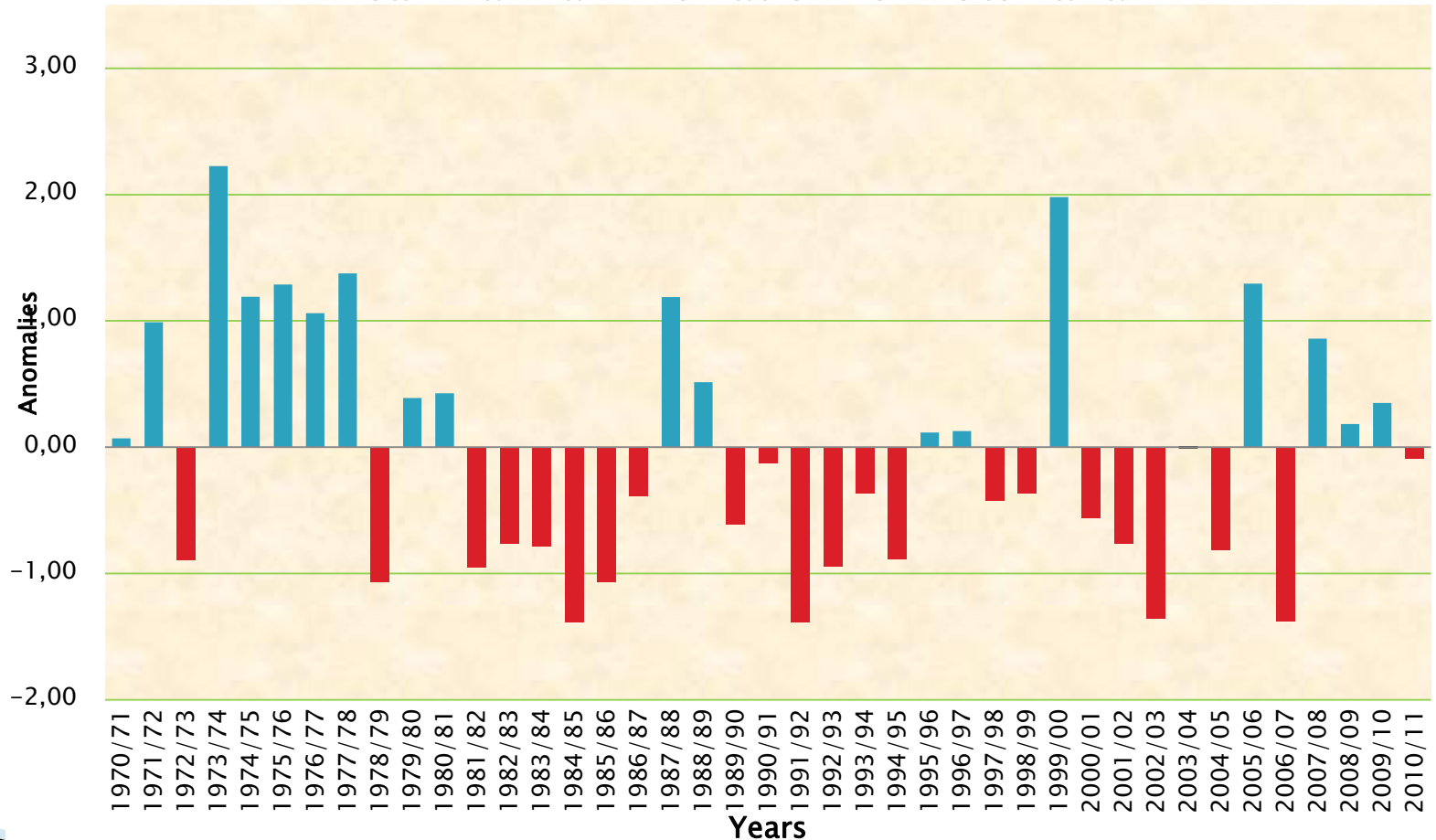
- ▶ Climate –dry and semi dry
- ▶ Rainfall – Low, erratic, uneven distribution



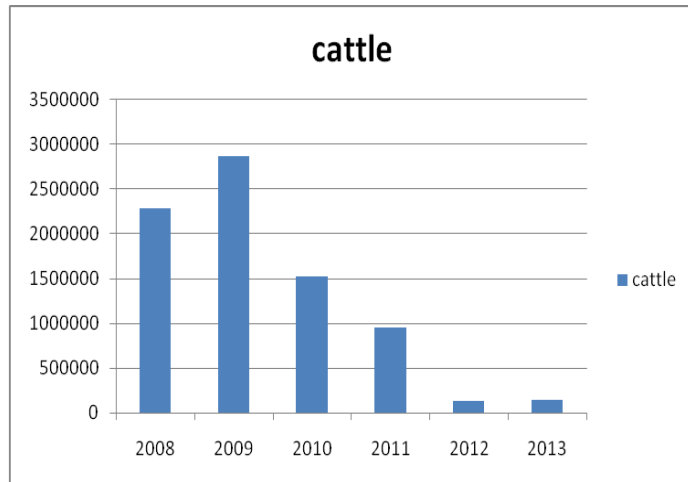
Spatial annual rainfall distribution over Botswana 1971-2000. Source: Department of Meteorological Services, Botswana

# Drought episodes

## Mean Rainfall Deviation for Botswana



# Drought Impacts



Botswana national cattle herd size from 2008 to 2013.

Source: Botswana Vulnerability Assessment Report 2013.



Agriculture

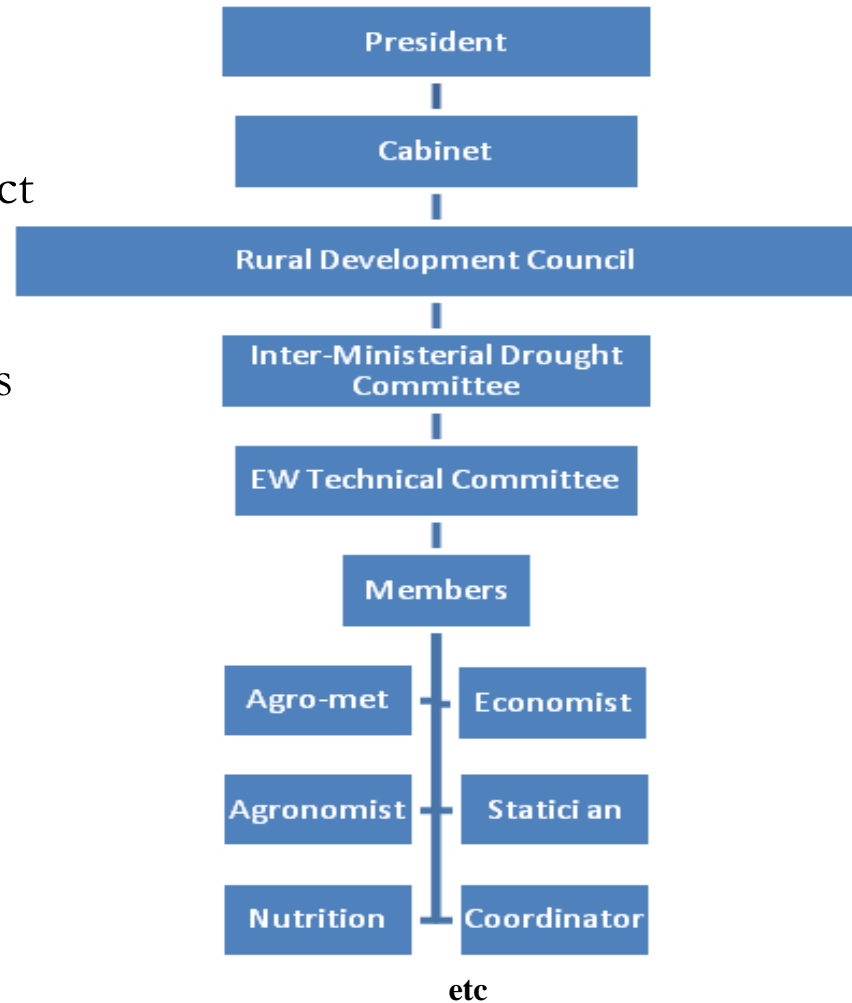
Water

Health

# EWS

The indicators:

- Rainfall;
- Area ploughed and planted to reflect food security at household level;
- Conditions of rangeland, livestock, water, wildlife, and malnutrition levels



# Drought Relief & Response

- ▶ National Disaster Management Office (NDMO) –
  - Coordinate DRR activities including drought
- ▶ Ministry of Local Government and Rural Development -
  - Managing drought relief

During drought:

- All local authorities and ministries mobilized

Types of relief:

- Intensive labour works
- Free supplementary feeding
- Subsidies on livestock feeds, seeds, vaccines etc

# Alleviation of Drought Impacts

- ▶ **Review of 1992 the Drought Relief Programme.**

Past relief measures that contributed to land degradation such as clearance and de-stumping schemes were dropped.

- ▶ **National Water Master Plan**

- ▶ **National Conservation Strategy and Agricultural Policy**

Support was given to proposals that gave priority to investments in water conservation, appropriate land use and improved management techniques.  
- the above Policies contributed to the implementation of this approach



**THANK YOU FOR YOUR  
ATTENTION!**

