

Drought conditions and management strategies in China

Mei Xurong, Principal Scientist & Team Leader

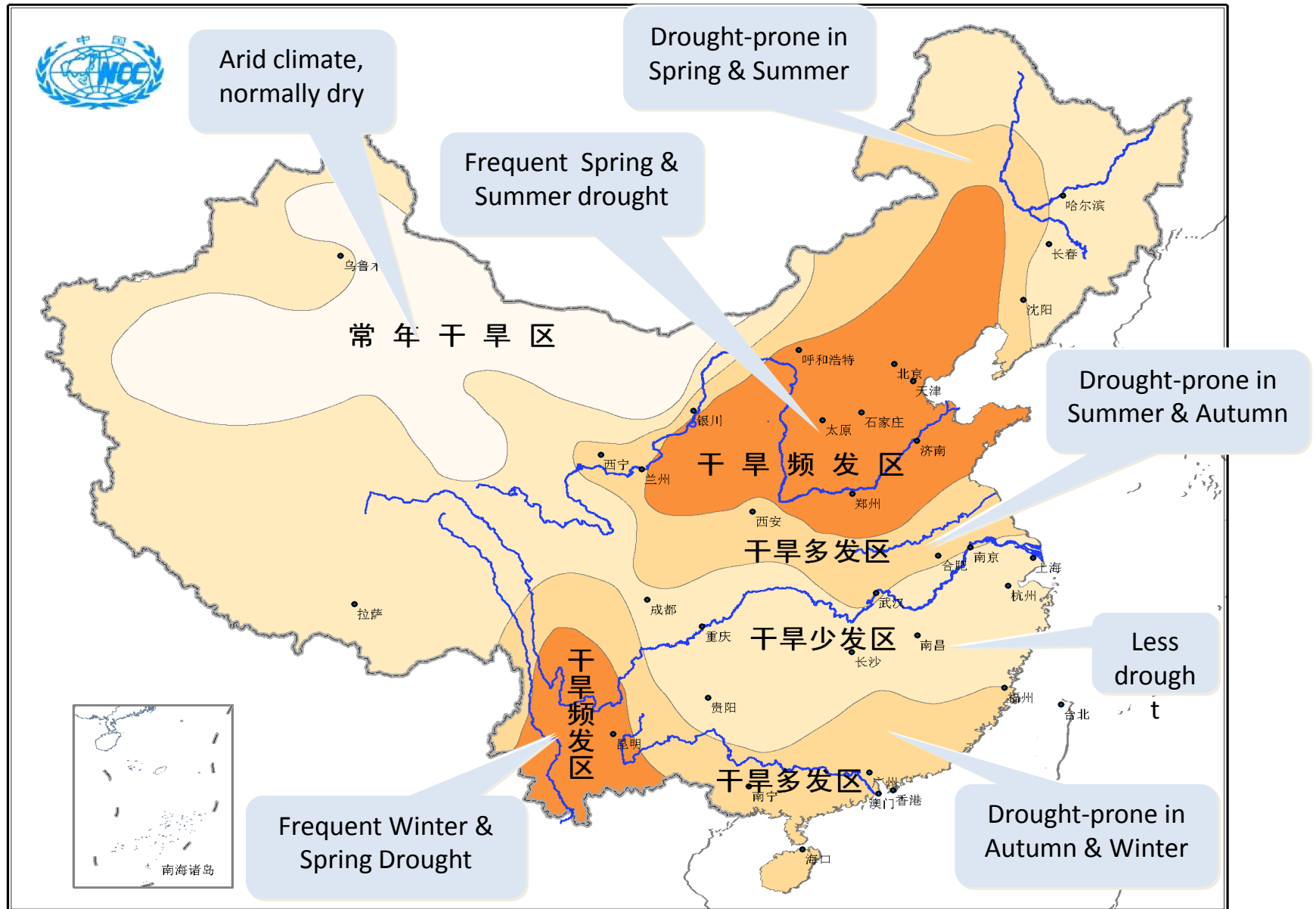
Director General, Department of Research Management, CAAS

Director, State Engineering Laboratory of Efficient Water Use & Disaster
Reduction for Crops, NDRC

Director, Expert Steering Group for Disaster Prevention & Mitigation, MOA

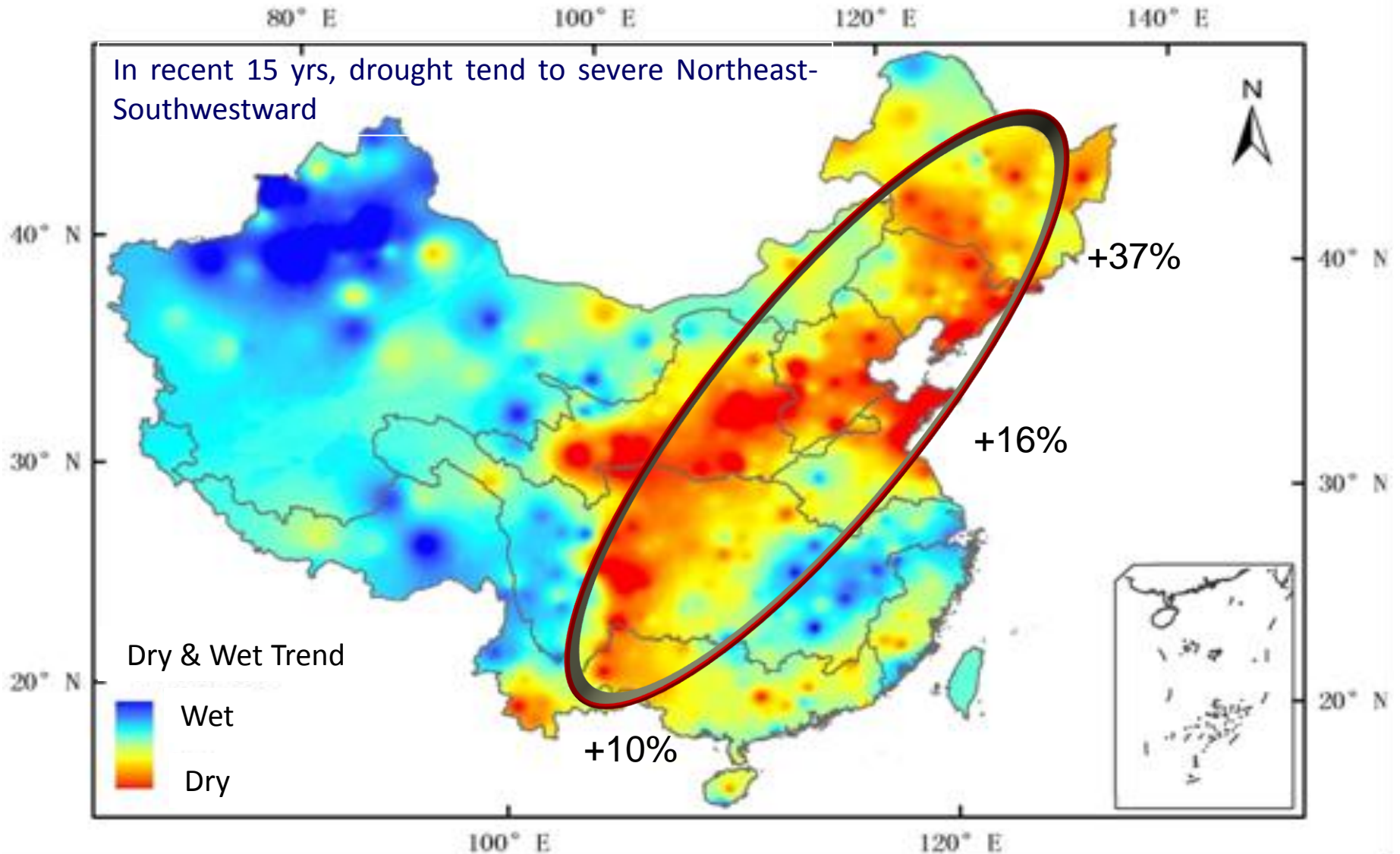
Director, Key Laboratory of Agricultural Environment, MOA

Dry Conditions in China

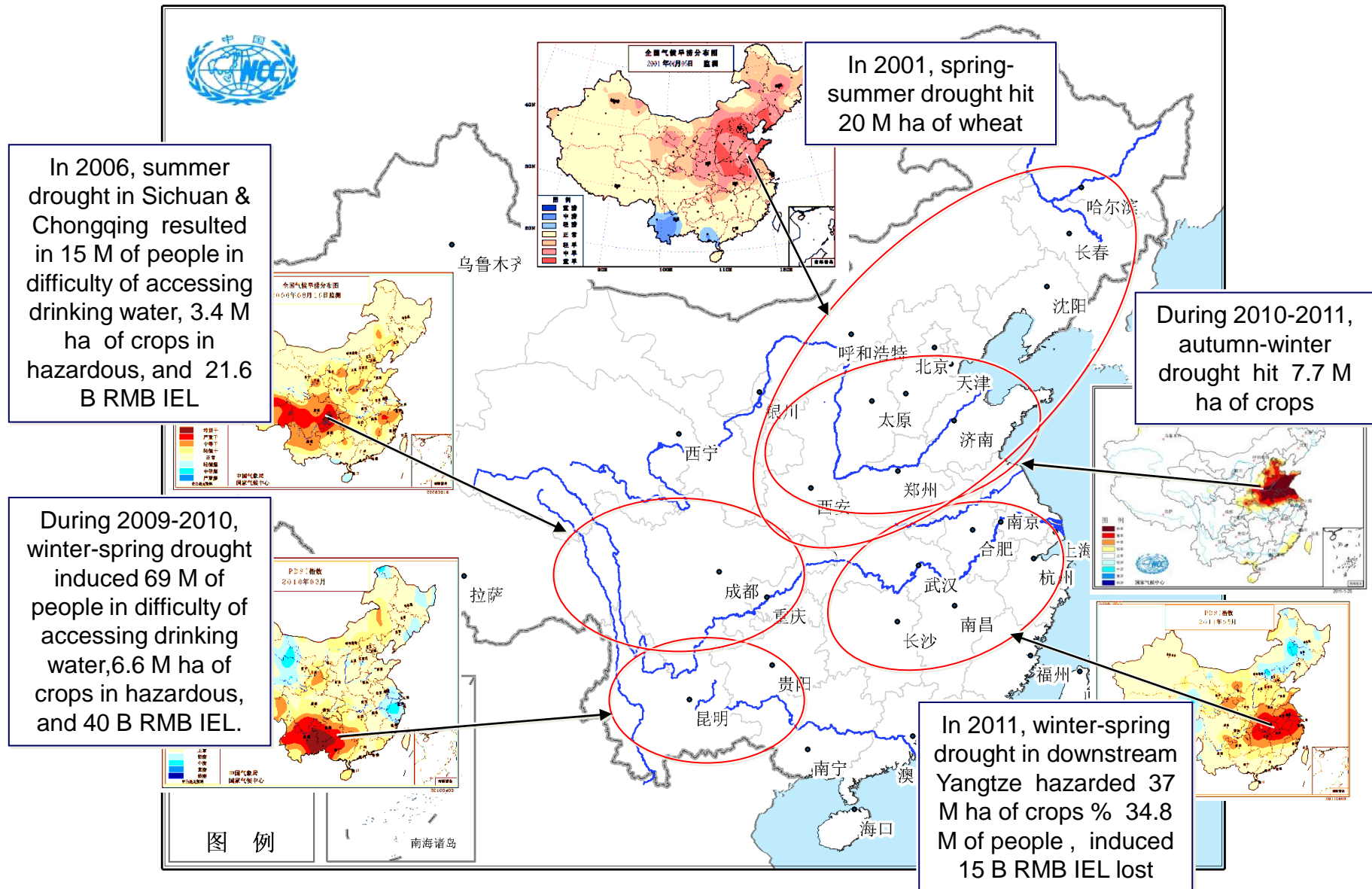


Spatial changes of drought severity

In recent 15 yrs, drought tend to severe Northeast-Southwestward



Severe drought events in recent 10 years



Drought Impact and Vulnerability Assessment

Vulnerability

Agriculture

Drinking water

Forestry

Grassland

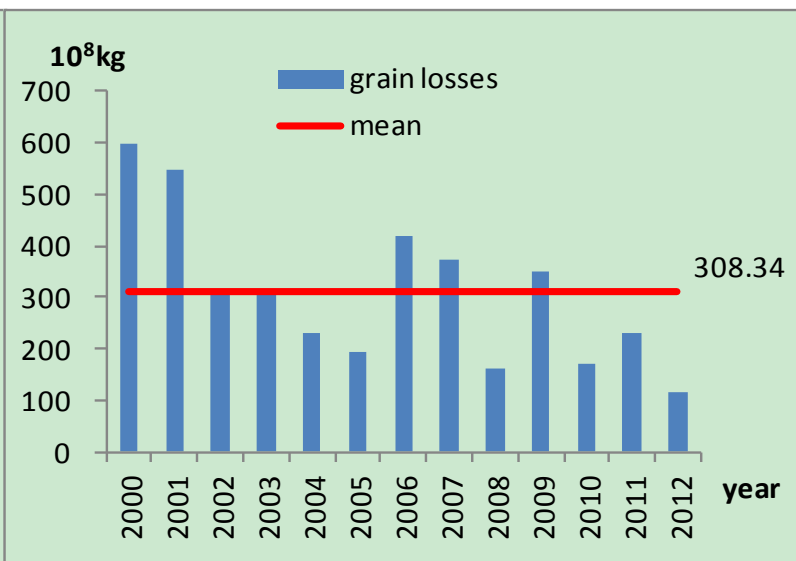
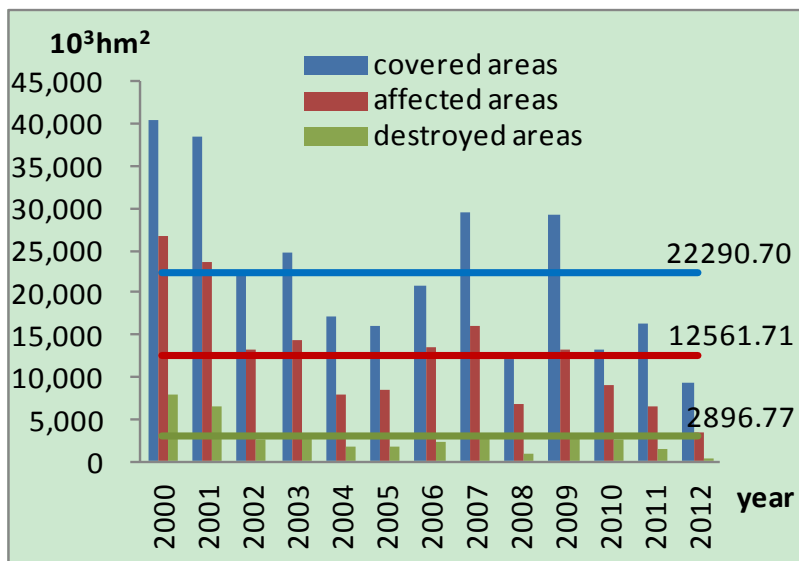


Figure 1. Drought covered, affected and destroyed crop areas, and grain losses.

Industry

Service

Hydraulic power

Water carries

Environment

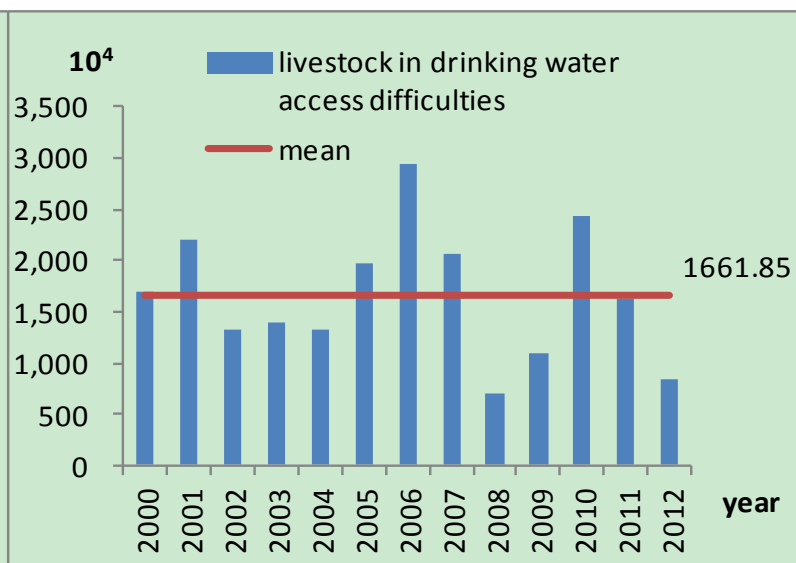
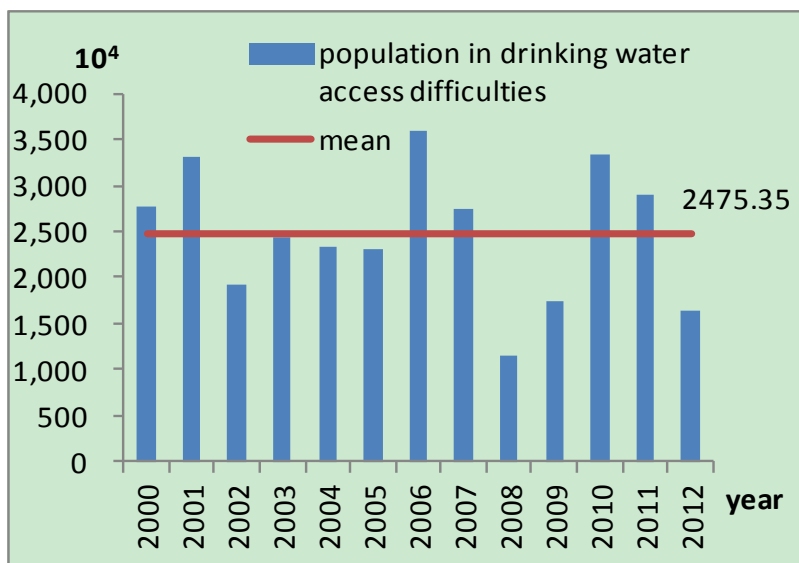
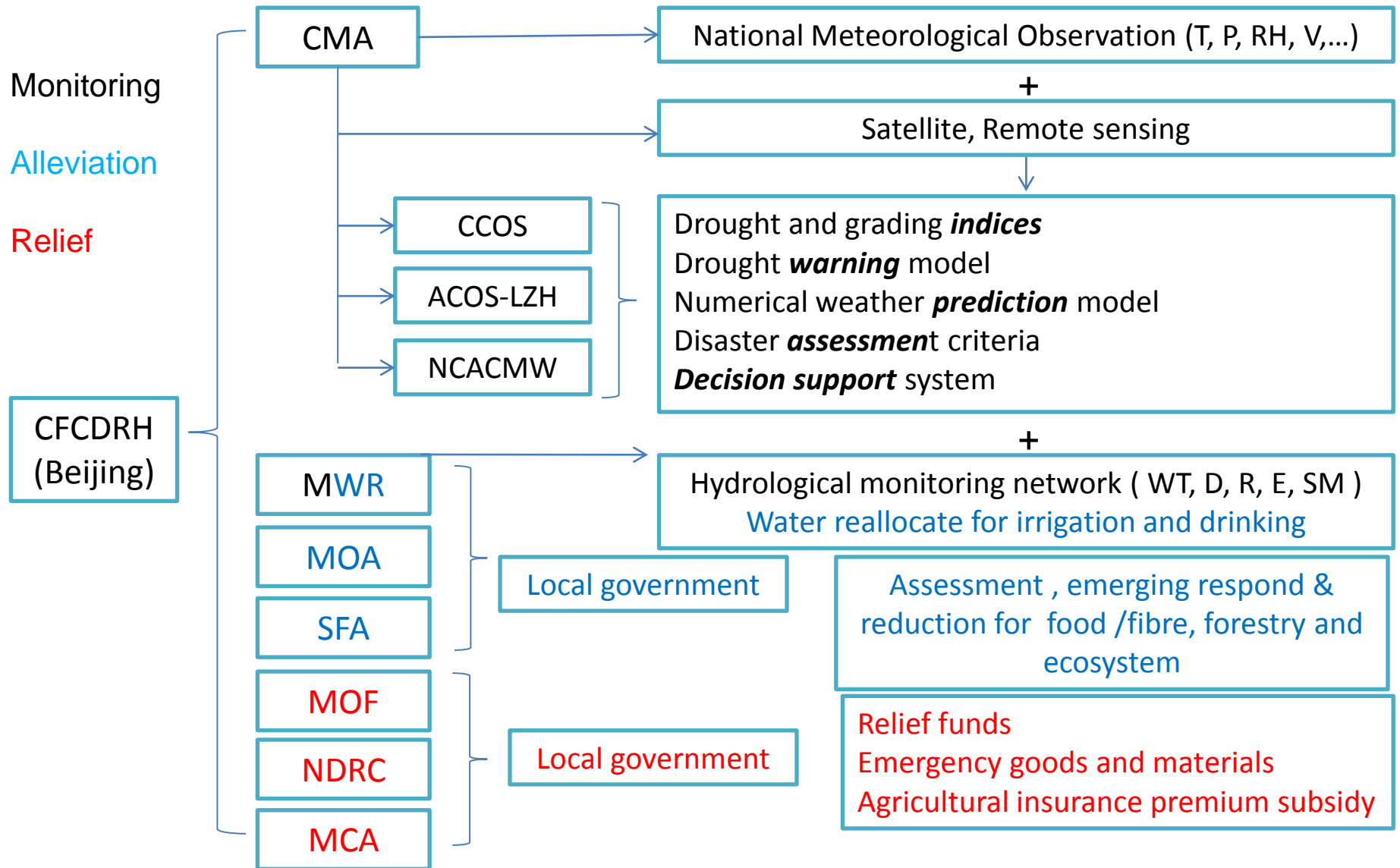


Figure 2. Population and livestock in drinking water access difficulties

Drought monitoring, early warning, alleviating & relief system



The need for knowledge and skills

- Emergency response rather than drought risk assessment , preparedness and management
- Historical drought scenarios and real-time occurrences, drought-prone-object based monitoring and risk assessment are essential knowledge bank
- Information, knowledge and experience exchange and sharing should be improved among meteorological, water, agricultural, civil administrative and healthy departments
- Drought commercial insurance products

Thank you!