



CRiSDA

Climate Risk Service Austria

powered by 



Co-Designing a Climate Risk Service

The example of drought impacts
on agriculture in Austria

02. September 2025

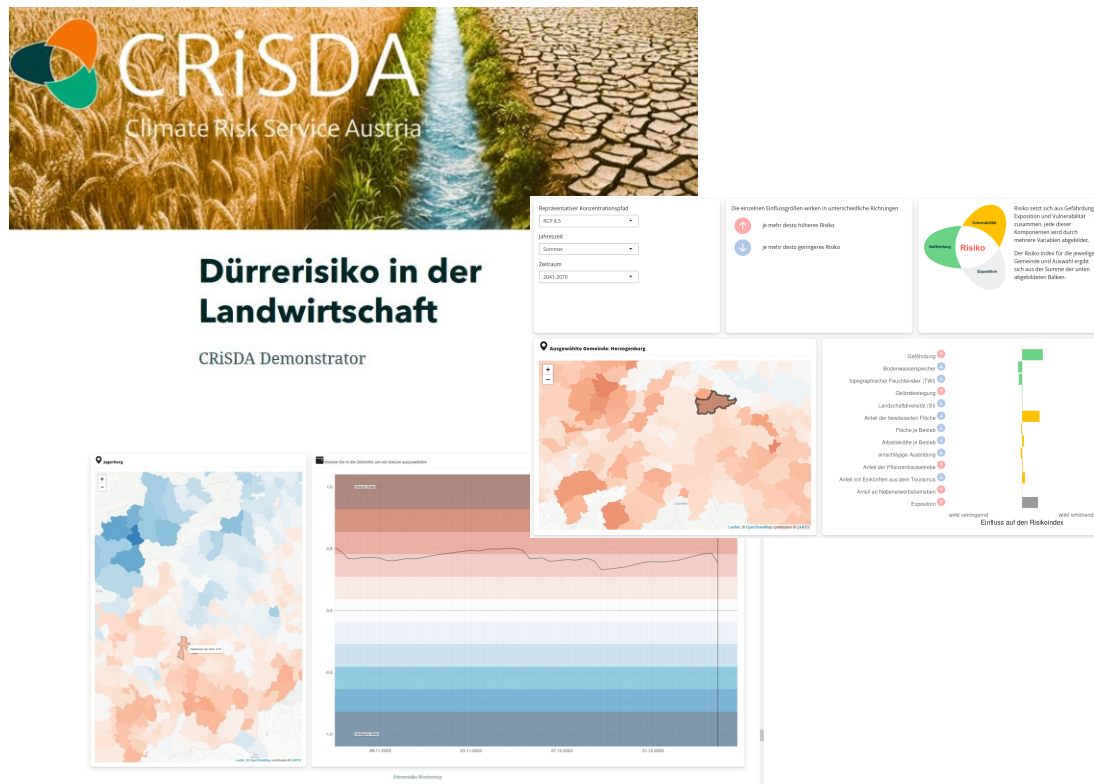
Climate Risk → Operationalise!



Climate Risk Services → Context-specific, scale dependant & complex - Define!

Co-Creation → Together with users – Co-Create!

Demonstrator - Climate Risk Service Drought & Agriculture



Handbook – Co-Creation

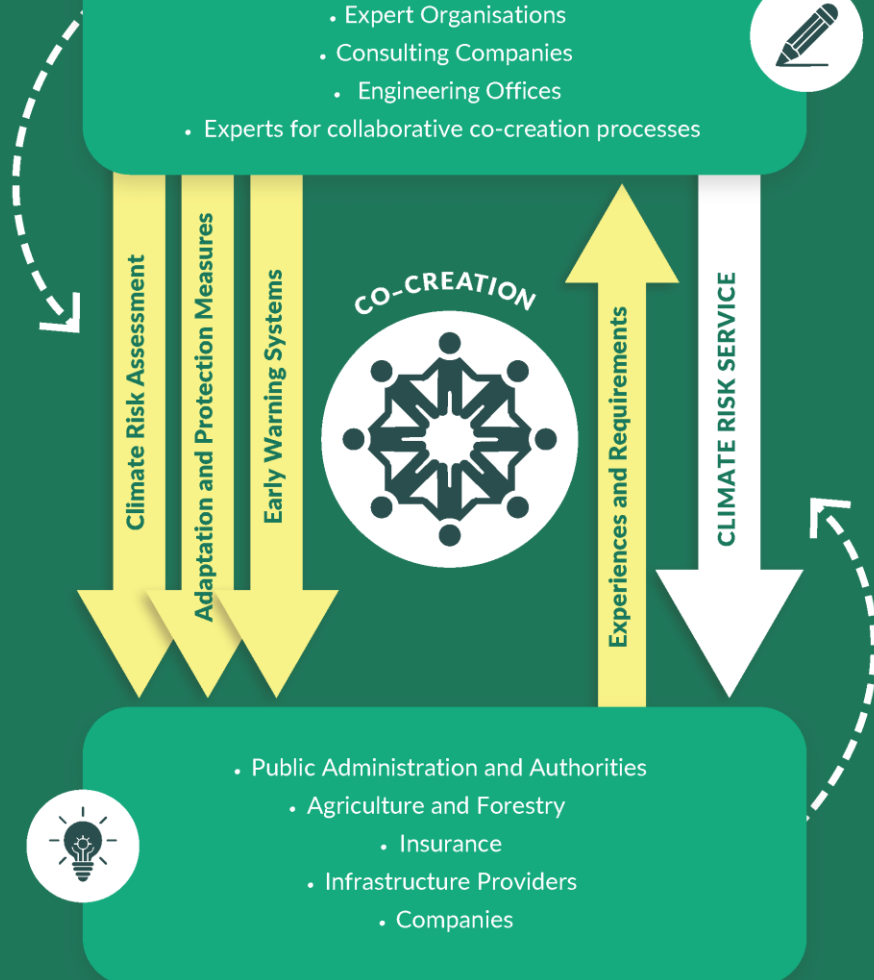
- Definition of Climate Risk Service
- Methodological steps for co-creation
- Transferable and generic



Providers

CONSORTIA CONSISTING OF:

- Research Institutes
- Expert Organisations
- Consulting Companies
- Engineering Offices
- Experts for collaborative co-creation processes



End-Users

- Public Administration and Authorities
 - Agriculture and Forestry
 - Insurance
- Infrastructure Providers
- Companies



Impact Chains for Drought-related crop failures



Consists of four tools:

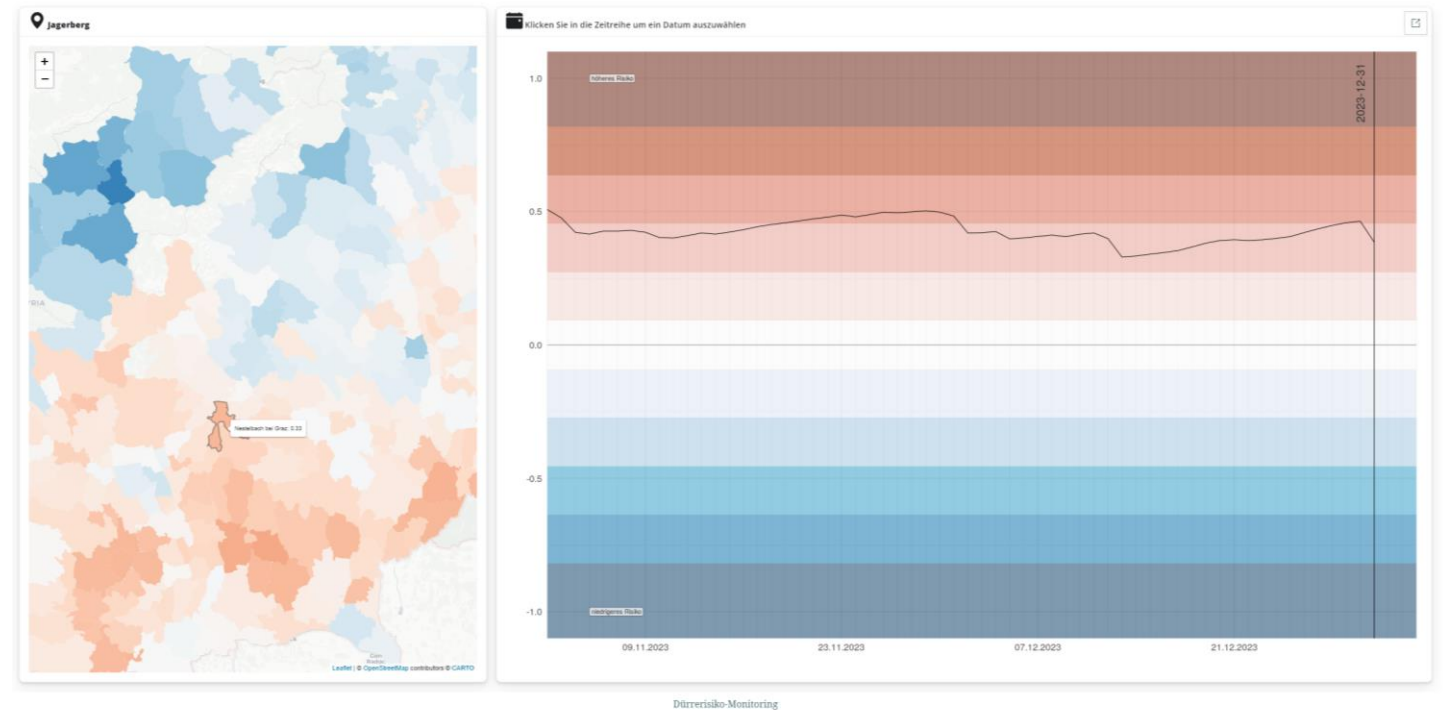
1. **A StoryMap:** Interactive visualisation of the indicators (Scrollstory)



Available on the homepage at
crisda.at/demonstrator

Consists of four tools:

1. A StoryMap:
crisda.at/demonstrator
2. A monitoring tool (currently only
exemplary with past data)



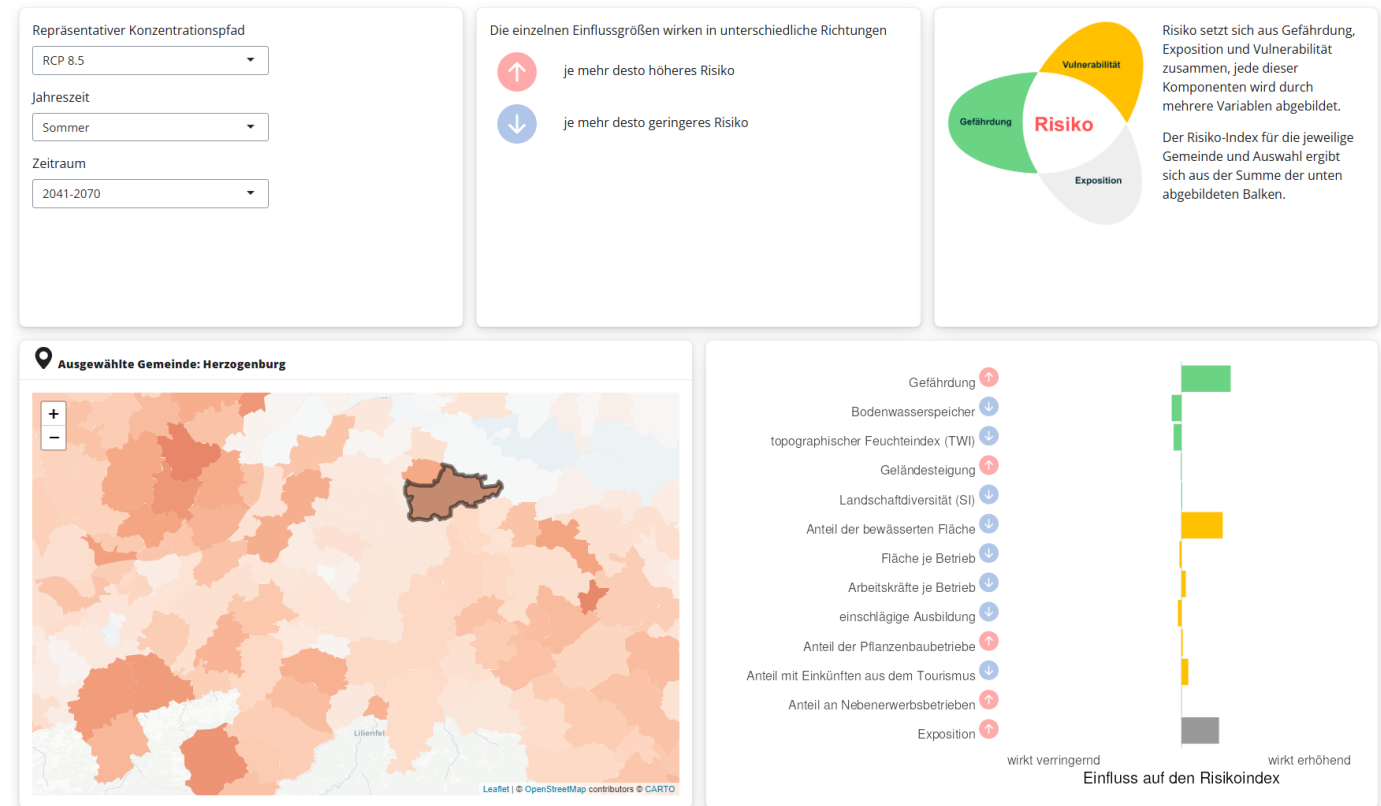
Consists of four tools:

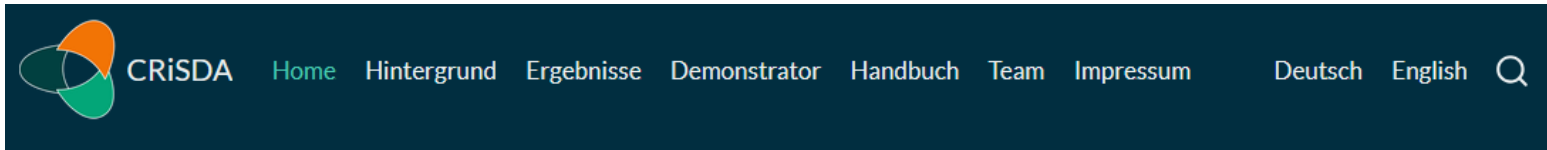
1. A StoryMap:
crisda.at/demonstrator
2. A monitoring tool (currently only exemplary with past data)
3. A tool for visualising long-term trends



Consists of four tools:

1. A StoryMap:
crisda.at/demonstrator
2. A monitoring tool (currently only exemplary with past data)
3. A tool for visualising long-term trends
4. A presentation of the components of the risk index





GeoSphere Austria

RiskLab – Weather, Climate & Natural Hazards

Dr. Stefan KIENBERGER

stefan.kienberger@geosphere.at

