

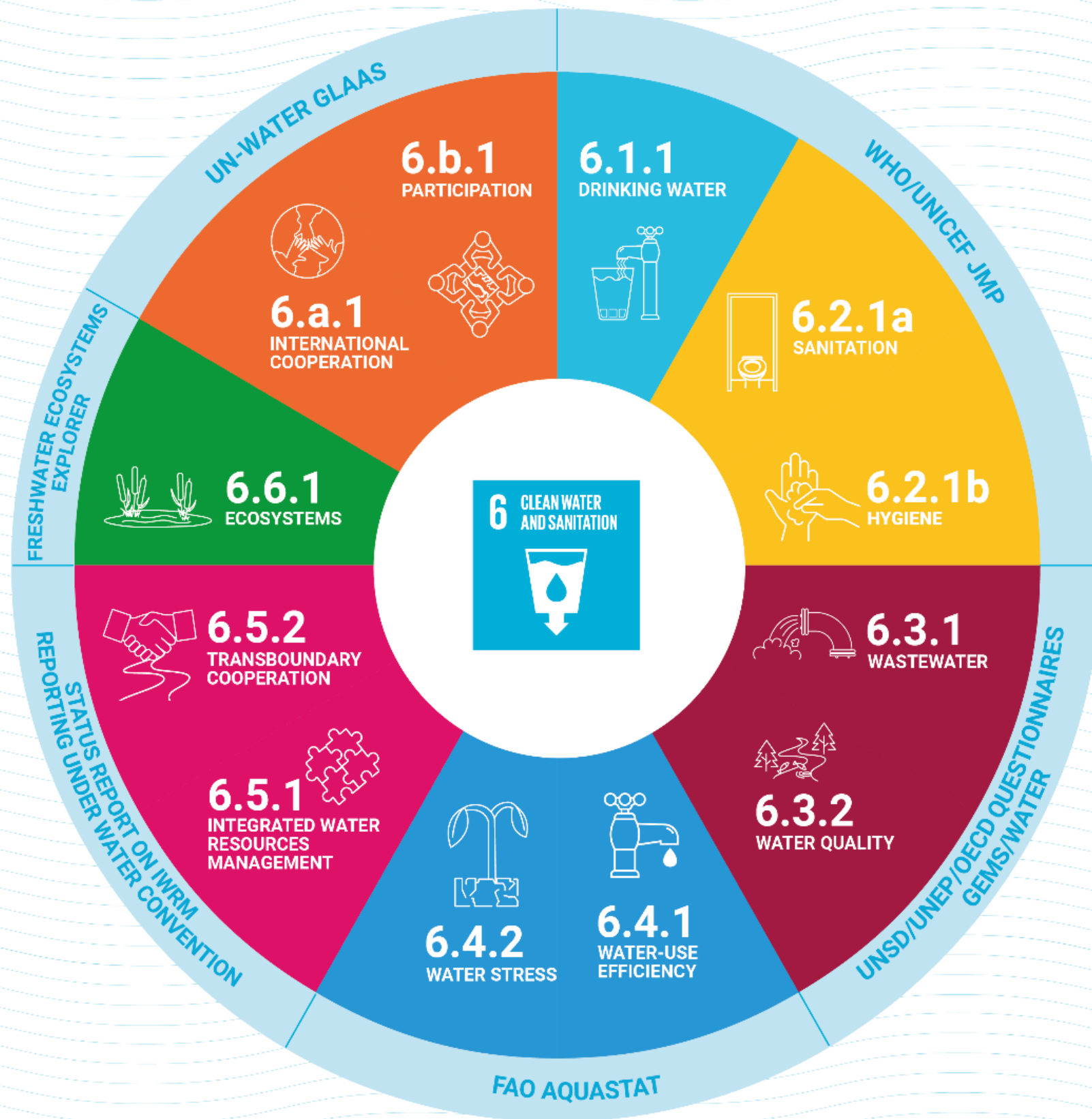
Conveners Logos

# Drought Impacts on WASH

Richard Johnston, WHO

WHO/UNICEF Joint Monitoring Programme on  
Water Supply, Sanitation<sup>1</sup> and Hygiene (JMP)

[johnstonr@who.int](mailto:johnstonr@who.int)



INDICATORS	CUSTODIANS
6.1.1 Proportion of population using safely managed drinking water services	WHO, UNICEF
6.2.1 Proportion of population using (a) safely managed sanitation services and (b) a hand-washing facility with soap and water	WHO, UNICEF
6.3.1 Proportion of domestic and industrial wastewater flows safely treated	WHO, UN-Habitat, UNSD
6.3.2 Proportion of bodies of water with good ambient water quality	UNEP
6.4.1 Change in water-use efficiency over time	FAO
6.4.2 Level of water stress: freshwater withdrawal as a proportion of available freshwater resources	FAO
6.5.1 Degree of integrated water resources management	UNEP
6.5.2 Proportion of transboundary basin area with an operational arrangement for water cooperation	UNECE, UNESCO
6.6.1 Change in the extent of water-related ecosystems over time	UNEP, Ramsar
6.a.1 Amount of water- and sanitation-related official development assistance that is part of a government-coordinated spending plan	WHO, OECD
6.b.1 Proportion of local administrative units with established and operational policies and procedures for participation of local communities in water and sanitation management	WHO, OECD

# CR-WASH indicator review (adaptation)

- 2024-2025 process, link with GGA
- JMP: WHO/UNICEF Joint Monitoring Programme (6.1, 6.2)
- GLAAS: WHO-led Global Analysis <sup>3</sup> and Assessment of Sanitation and Drinking Water (6.a, 6.b)
- Consortium: Leeds, Bristol, Oxford, University of Technology-Sydney

# Climate hazards considered

- Floods
- Changing precipitation patterns
- High sea level
- Fire weather
- Severe wind
- **Droughts**
- Changing air temperature, and
- Extreme heat

# Systematic and scoping reviews

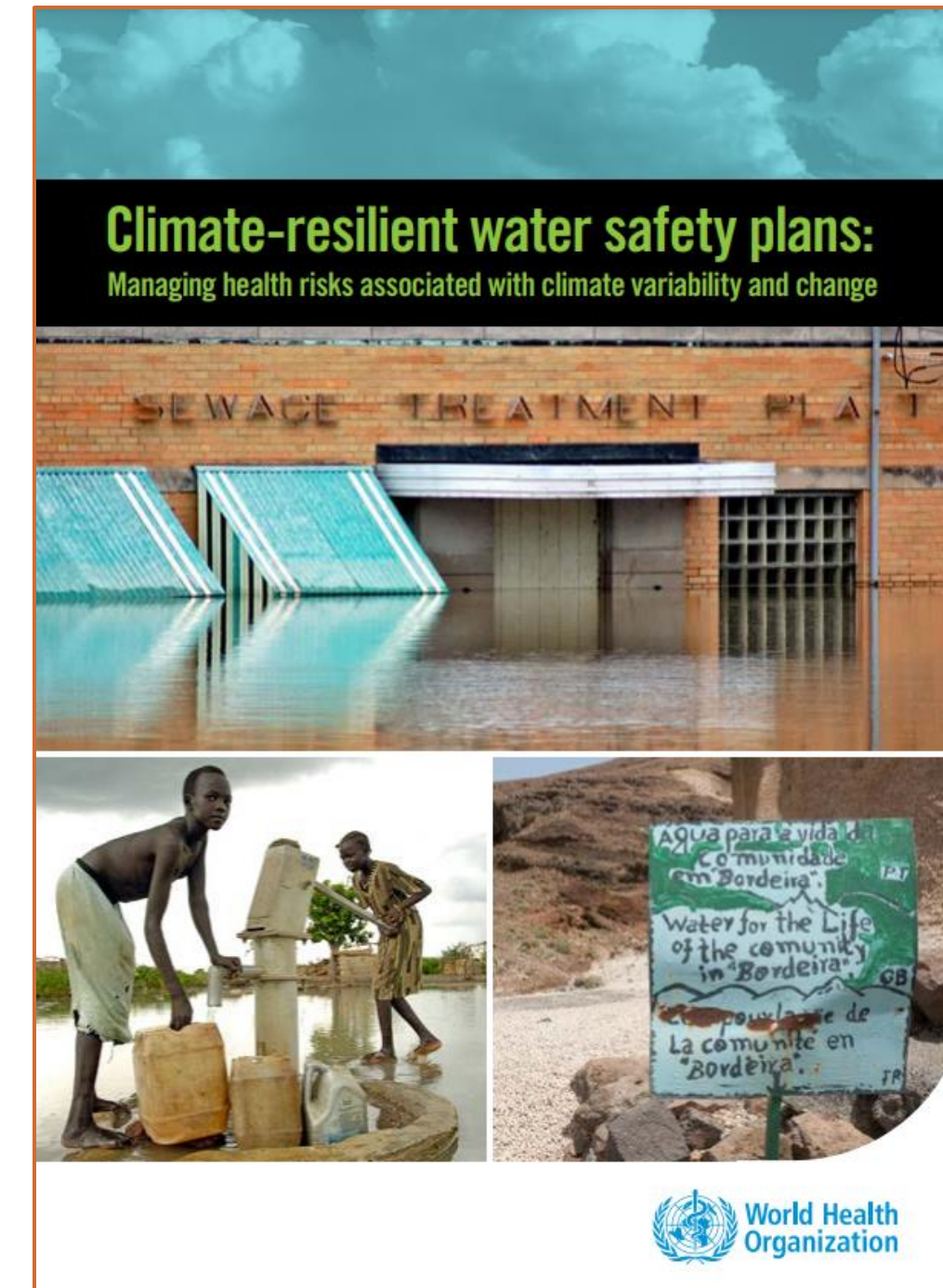
- **Framings – underway**
  - Identifying relevant frameworks and indicators in WASH sector
  - Identifying relevant frameworks and indicators in WASH-adjacent sectors
  - Service functioning, user experience outcomes, pertinent attributes and adaptation actions
  - Lessons on indicators and measurement methods
- **Evidence on water supply – underway**
  - Evidence linking attributes and actions relating to water supplies to climate resilience
  - Review of reviews in the first instance to identify major review gaps
- **Evidence on sanitation and hygiene – underway**
  - Evidence linking attributes and actions relating to sanitation and hygiene to climate resilience
- **Methods of measurement – to follow the other reviews**
  - To follow the other reviews

# Drinking water and droughts

- Reduce quantity and quality of water available for human consumption
  - Microbiological, chemical risks
- Poor drinking water quality already accounts for 505k deaths per year from diarrhoeal disease
- Reduced consumption of drinking water may decrease the ability of the body to manage heat stress during extreme heat events

# Response

- Climate-resilient Water Safety Planning
  - Supply augmentation by service providers and users
  - Minimize water losses in distribution
  - Management of user demand through conservation and smart appliances



# Hygiene

- Inadequate hand hygiene already accounts for 740k deaths per year
  - 384k from diarrhoea
  - 356k from acute respiratory infections
- Reduced water -> less<sup>7</sup> hand hygiene
- Bathing: clear but unquantified health impacts
  - Mental health as well as infectious disease

# Sanitation

- Reduced water can impact water-borne sanitation
  - Less capacity for flushing; blockage of sewers
  - (Possibly) reduced efficiency in treatment plants
- Drought can increase demand for scarce water resources, including reuse of (waste)water
  - This can be done safely but can also be done unsafely and lead to health risks



# Health inequalities

- Geographic
  - Lowlands, remote areas, urban/rural
- Socio-economic
  - Wealth, class, caste, ethnicity
- Demographic
  - Co-morbidities, sex, age
- Intersectionality

9

# Thank you!