



# Welcome to Geneva!

## INFORMATION NOTE

### Drought Resilience +10 Conference

Hybrid meeting

30 September – 2 October 2024

WMO Headquarters  
Geneva, Switzerland

### Contents

1. Meeting Venue .....	2
2. Accommodation .....	2
3. Transportation.....	2
3.1. City transportation .....	2
3.2. Airport transportation.....	3
3.3. Transport Mobile Applications .....	4
4. Entry requirements .....	4
5. Other issues.....	4
5.1. Language.....	4
5.2. Weather in Geneva in September/October .....	4
5.3. Internet facilities .....	4
5.4. Currency .....	4
5.5. Security and safety in Geneva .....	5
5.6. Insurance .....	5
5.7. Swiss voltage and power plugs.....	5

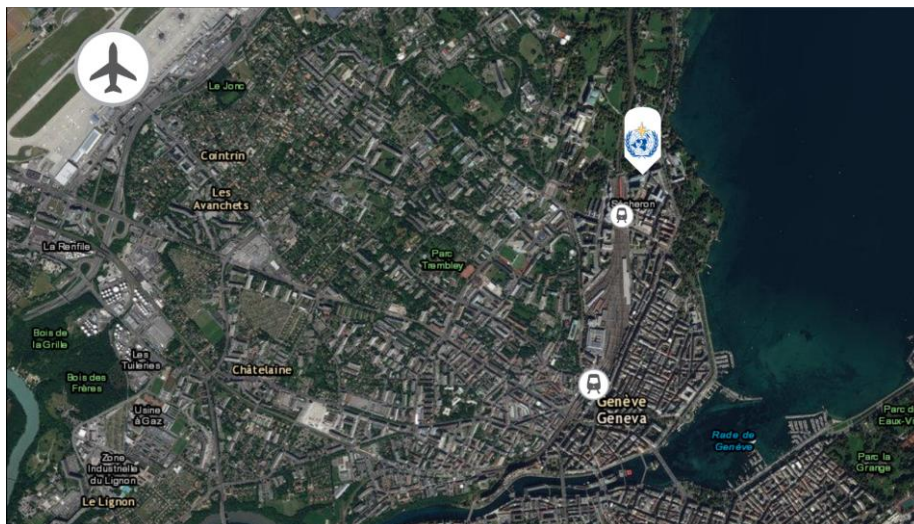
## 1. Meeting Venue

The Drought Resilience +10 Conference will be held at the WMO Headquarters in Geneva, Switzerland, from 30 September to 2 October 2024, in a hybrid mode.

The meeting will start at 08:00 CEST on Monday, 30 September. Please find the link to the tentative agenda here:

### World Meteorological Organization Address:

7 bis, avenue de la Paix, CH 1211 Geneve, Switzerland



## 2. Accommodation

Participants are expected to make their own accommodation arrangements directly with the hotels. Please note that WMO doesn't have any deal for special rates with hotels. City/tourist tax is added by most hotels on top of the room price (per night per person is in the range of CHF 1.65-4.75). **An extensive list of hotels was attached to the accompanying email to this note.** You can also search for other options through <https://booking.com/>

## 3. Transportation

### 3.1. City transportation

Geneva has a very good public transportation system that will quickly and conveniently get you to any corner of the city. See the [map of public transport](#).

**Please note that most hotels in Geneva provide guests with a free ticket for public transport.**

A single UNIRESO ticket is valid for bus, tram, lake boat, and local train (including [Cornavin-Airport train](#)) falling within given UNIRESO zone (zone 10). The most common ticket is valid for 60 minutes and is transferable (CHF 3.00). The alternative is a short 3 stops ticket (CHF2.00).

You are supposed to buy your ticket at the station before the vehicle comes. There is a date and time printed on the purchased ticket in the moment it's printed, so **always buy only one ticket!** **Without having a valid ticket, you will receive a fine (there is a random**

**check process) of CHF 100 for the first offense and you will also be added to a national fare-dodger register.**

**The closest public transport stations to WMO are:**

- **Train:** Sècheron station (trains from Cornavin)
- **Bus:** Jardin Botanique (Buses 1 and 25 from Cornavin)

More information about the Geneva Public Transportation is accessible at [www.tpg.ch](http://www.tpg.ch).

### **3.2. Airport transportation**

The airport is located at nearly 4 km from the Geneva city center. It is easily reachable by train or by bus. **When you arrive at the airport, you can get an 80 minute ticket for Geneva Public Transport for Free.** The ticket machine is located at the luggage retrieval hall and prints the free ticket without requirements or limitations upon the pressing of the button. Free ticket entitles You to take an [airport train](#) (train from the airport to the center), [bus](#), and tram.

#### **Trains:**

All trains departing from / going to Genève-Aéroport station stop in the City Center of Geneva in [Geneva-Cornavin station](#) (7-minutes trip between the two stations, up to seven trains per hour at peak hours). The single ticket for CHF 3.00 allows you to travel to the city centre by train from the airport.

You can buy the ticket [online](#) or upon arrival at the machine located in the “baggage reclaim area” of the airport (accessible only to arriving passengers) or the counters of the SBB Travel Centre in Genève-Aéroport station ([More information](#)).

#### **Buses:**

[TPG](#) city buses are available from the airport (stops at the Check-in, in front of or on the side of the CFF station) to the city centre, at a frequency of 8-15 minutes during rush hour for urban lines and 20-30 minutes during peak hours for regional lines. Information on timetables and fares can be obtained at the information desk in the Arrivals hall of the airport, opposite the customs control exit. Tickets can be purchased from the machines located at bus stops (CHF 3.00) and at the Swiss railway station by credit cards or cash.

**Buses No. 5 and 10** stop in the City Center of Geneva in [Geneva-Cornavin station](#). A map of bus stops at the airport and more information about the buses [can be found here](#).

#### **Taxis**

Taxis are readily available at the Geneva international Airport. Costs vary depending on the location of your hotel. Fares between the airport and city range from **CHF 35-45** and depend on traffic density, the time of the day and the number of passengers. Public transportation is also available.

#### **Hotel Shuttles**

Some hotels provide shuttle service, which could be free of charge. Please check the possibility with your hotel.

More information about all modes of travel from the airport to the city centre is accessible at <https://www.gva.ch/en/Site/Passagers/Acces-Transports/Transports-publics-aeroport/Bus-urbains-Geneve>.

### 3.3. Transport Mobile Applications

The following mobile app helps you to travel more easily using Geneva's public transport by providing real-time schedules and nearby stops.

- SBB Mobile app (<https://www.sbb.ch/en/timetable/mobile-apps/sbb-mobile.html>)
- Tpg mobile app (<https://www.tpg.ch/en/voyager/plus-de-mobilite/tpg-app>)

## 4. Entry requirements

### 4.1. VISA ARRANGEMENTS

All participants requiring a visa to enter Switzerland should make their visa application directly to the nearest embassy or consulate of Switzerland, submitting invitation letters issued, if necessary, by the WMO Secretariat, together with other required documents. Holders of Diplomatic, Service, Official or specified passports from some countries may not require a visa by virtue of bilateral agreements.

If a formal request for visa issued by the WMO is needed as a support document, please send the request to the WMO travel office at [mrequest@wmo.int](mailto:mrequest@wmo.int)

Please note that Switzerland is **NOT** part of the European Union, however, is under the Schengen Visa rules.

**Obtaining a visa is the responsibility of the participant.**

## 5. Other issues

### 5.1. Language

There will be interpretation in the six official UN languages (Arabic, Chinese, English, French, Russian and Spanish for all of the plenary sessions.

French is spoken in Geneva, however, most people speak English at restaurants and hotels.

### 5.2. Weather in Geneva in September/October

Average temperature during the week of the event (30 September – 2 October) is about 15°C and it ranges between as low 10°C at night and up to 20°C during the day. This time of year rain is possible but updated weather information can be found on the MeteoSwiss websites at <https://www.meteoswiss.admin.ch/> or on the WMO world weather information services at <http://worldweather.wmo.int/en/city.html?cityId=193>

### 5.3. Internet facilities

Free Wireless internet connection is available at the WMO headquarters.

### 5.4. Currency

Currency exchange services are available at the Geneva International Airport, as well as in banks. Most businesses, tour operators, airlines and hotels accept major credit and debit cards. The local currency is the Swiss Franc (CHF). The approximate exchange rate is below as of September 2024:

1 US\$  $\approx$  0.85 CHF

1 EURO  $\approx$  0.94 CHF

Please note the exchange rates will vary depending on where you change your currency.

## 5.5. Security and safety in Geneva

Switzerland is considered to be a safe country. However, you should always be aware of your surroundings while walking around Geneva.

National safety alerts and Swiss security advisories can be obtained by downloading "Alert Swiss", a mobile app by the Federal Office for Civil Protection, to help you plan for and stay safe in an emergency while in the country. See <https://www.alert.swiss/>

Emergency contacts in Geneva are given below. For further information see <https://www.ch.ch/en/safety-and-justice/emergencies-and-danger/>

Ambulance: **144**

Police: **117**

Fire service: **118**

REGA: **1414**

Tox-Zentrum: **145**

European emergency no: **112**

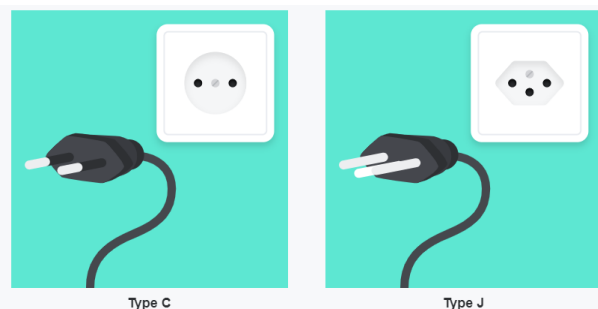
## 5.6. Insurance

The Conference organizers cannot accept liability for personal injuries sustained, or for loss of, or damage to, property belonging to conference participants or their accompanying persons, either during or as a result of the conference. Participants are advised to arrange for insurance to cover medical, travel, and personal effects while attending the meetings.

## 5.7. Swiss voltage and power plugs

In Switzerland, voltage is around 230V (50Hz) – the standard voltage for much of Europe. However, this is significantly higher than other non-European countries, so check your appliances and gadgets ahead of time to avoid any issues or incidents.

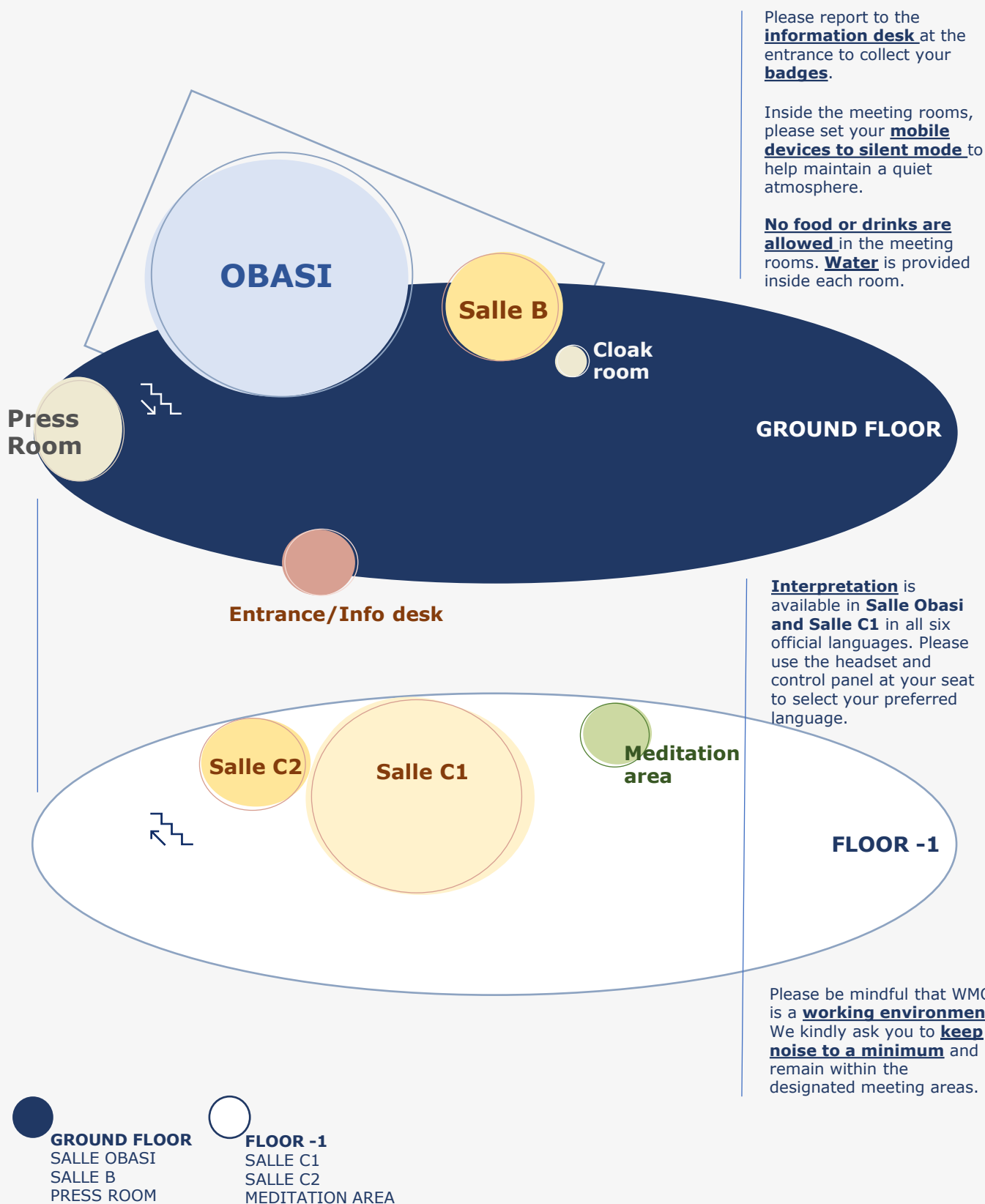
Switzerland has special power sockets: Type C sockets with two-pin plugs and Type J sockets with three round pins. Please note that the Swiss power sockets are different than the rest of Europe. If your appliances are not compatible with these sockets, you need to bring a power adapter compatible for Switzerland.







# WORLD METEOROLOGICAL ORGANIZATION



Please report to the **information desk** at the entrance to collect your **badges**.

Inside the meeting rooms, please set your **mobile devices to silent mode** to help maintain a quiet atmosphere.

**No food or drinks are allowed** in the meeting rooms. **Water** is provided inside each room.

**Interpretation** is available in **Salle Obasi** and **Salle C1** in all six official languages. Please use the headset and control panel at your seat to select your preferred language.

Please be mindful that WMO is a **working environment**. We kindly ask you to **keep noise to a minimum** and remain within the designated meeting areas.