A map of South Asia, including India, Pakistan, and Bangladesh, overlaid with a color-coded drought monitoring system. The colors range from blue (low drought risk) to red (high drought risk). The text 'South Asia Drought Monitoring System (SADMS)' is centered over the map in a large, white, sans-serif font.

South Asia Drought Monitoring System (SADMS)

International Water Management Institute (IWMI)

IDMP Virtual Exchange Meeting

13 December 2022

SADMS acknowledges the support of



RESEARCH
PROGRAM ON
Water, Land and
Ecosystems



RESEARCH PROGRAM ON
Climate Change,
Agriculture and
Food Security



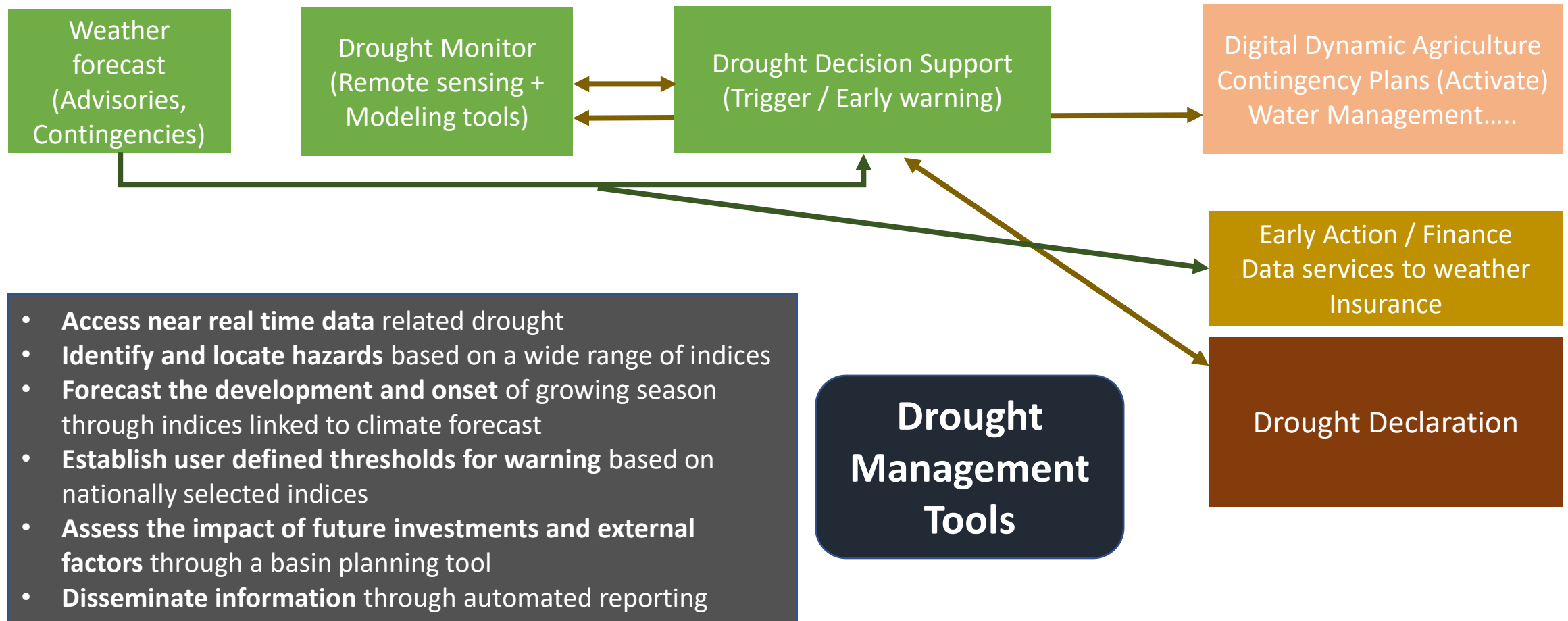
UNITED NATIONS
Office for Outer Space Affairs



Global Water
Partnership

Solution Platform “Integrated Drought Risk Management”

Next generation of the SADMS Platform



SADMS Components



SADMS

**South Asia Drought
Monitoring System**



Observation
and Monitoring



Prediction and
Forecasting



Planning and
Preparedness



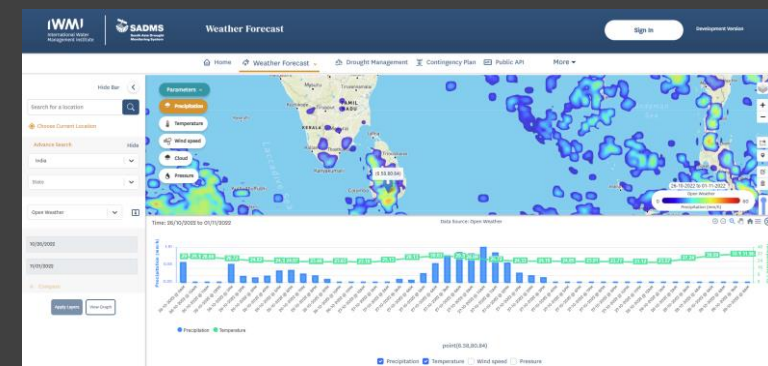
Communication
and Outreach



De-Risk and
Safety nets

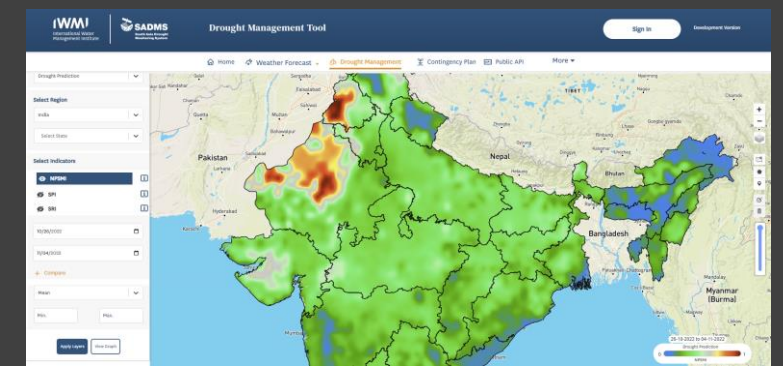


Weather and Climate Monitor



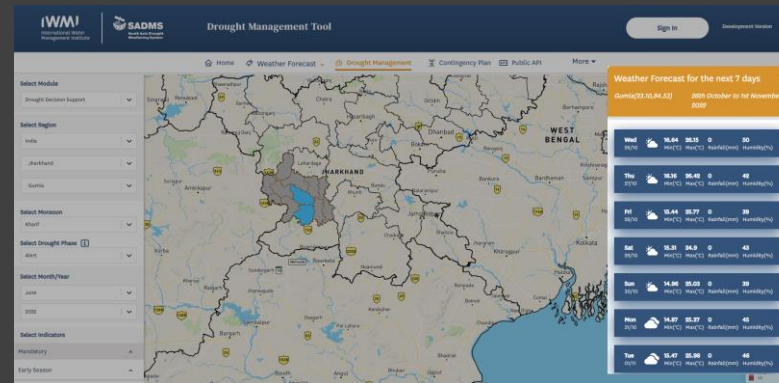
Products: (Sub)seasonal, short-term forecast
Source: IMD, IRI, ECMWF, NOAA

Drought Prediction



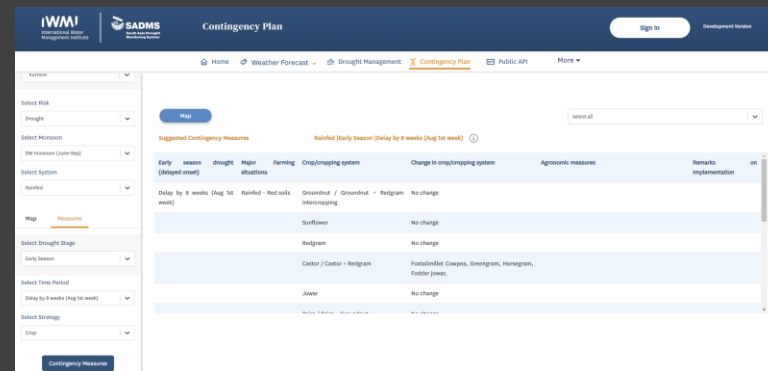
Products: Drought prediction using VIC model
Source: NOAA GEFS, GPM, ERA-5, IMD

Drought Decision Support tool



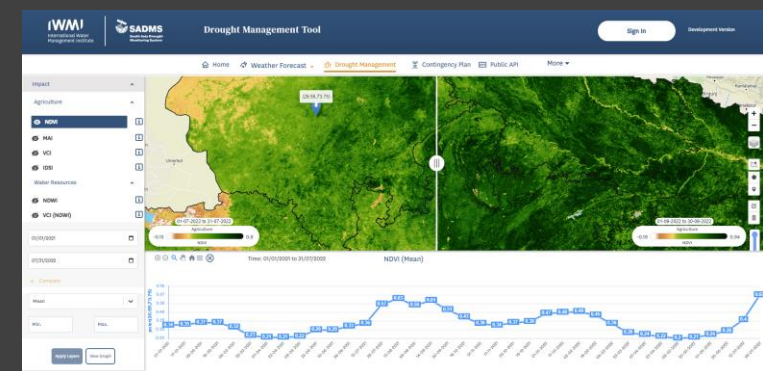
Products: Drought alert and active phase
Source: NASA MODIS, GPM, SMAP

Dynamic Drought contingency plan



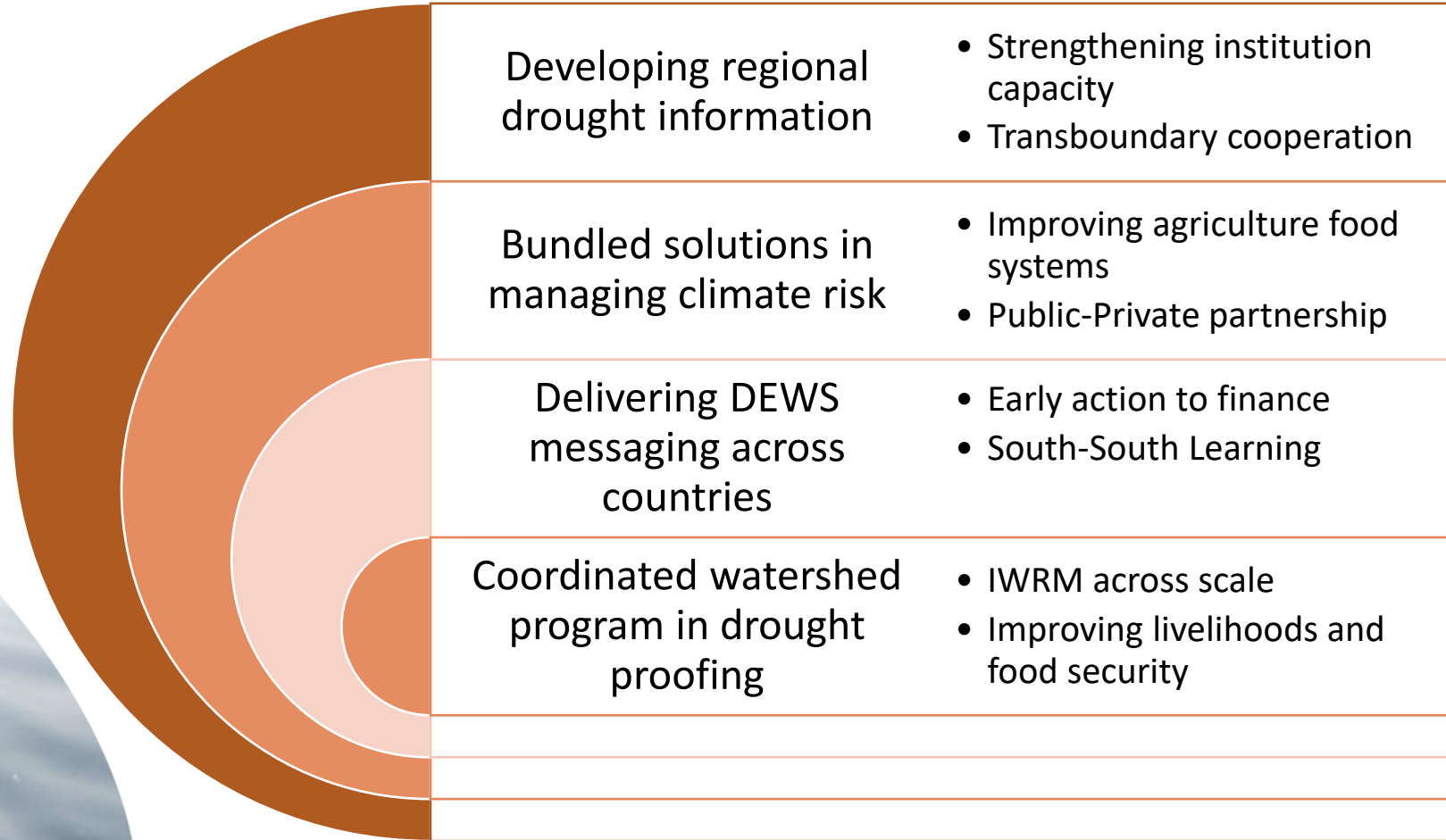
Products: Drought phase wise indices to activate contingency plans
Source: NASA MODIS, GPM, SMAP

Drought Monitor



Products: Drought indices mandatory and impact indicators e.g. SPI, VCI, VHI, IDIS
Source: NASA MODIS, GPM, SMAP

SADMS Value Chain



Thank you

Giriraj Amarnath

Email: a.giriraj@cgiar.org